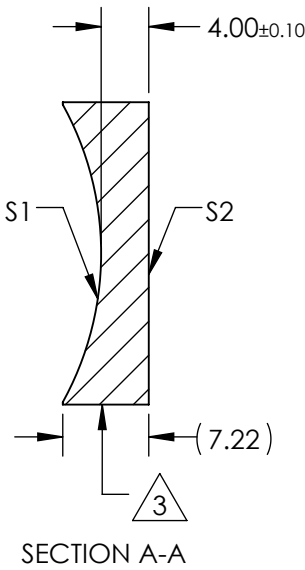
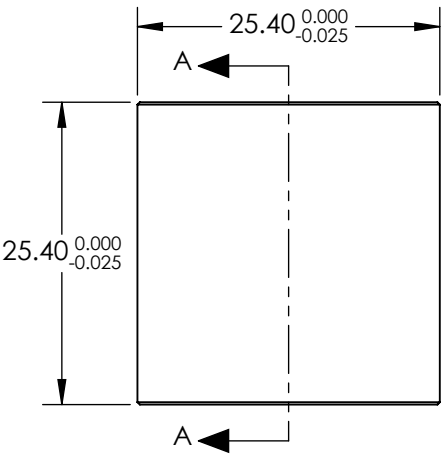

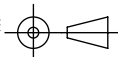
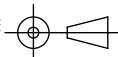


NOTES:

1. SUBSTRATE MATERIAL:  
N-BK7
2. COATING (APPLY ACROSS CLEAR APERTURE)  
S1 & S2:  
NIR II  
 $R(ABS) \leq 1.5\%$  FROM 750-800nm @ 0° AOI  
 $R(ABS) \leq 1.0\%$  FROM 800-1550nm @ 0° AOI  
 $R(AVG) \leq 0.7\%$  FROM 750-1550nm @ 0° AOI
3. FINE GROUND SURFACE
4. POWER, IRREGULARITY, AND SURFACE QUALITY SPECIFICATIONS APPLY ACROSS CLEAR APERTURE
5. FOCAL LENGTH TOLERANCE:  $\pm 1\%$
6. PLANO AXIS WEDGE TOLERANCE:  $< 5$  ARCMIN  
POWER AXIS WEDGE TOLERANCE:  $< 5$  ARCMIN  
AXIAL TWIST ANGLE:  $< 3$  ARCMIN
7. RoHS COMPLIANT



**FOR INFORMATION ONLY:  
DO NOT MANUFACTURE  
PARTS TO THIS DRAWING**

REV. A	S1	S2	SPECIFICATIONS SUBJECT TO CHANGE WITHOUT NOTICE DIMENSIONS ARE FOR REFERENCE ONLY			
SHAPE	CONCAVE	PLANO				
RADIUS	25.84	$\infty$	EFL	(-50)mm	 <b>Edmund Optics®</b>	
SURFACE QUALITY	40 - 20	40 - 20	BFL	(-52.64)mm		
CLEAR APERTURE	22.86 X 22.86	22.86 X 22.86			TITLE LENS CYL SHAPING 25.4 X 25.4mm X -50mm FL NIR II	
COATING APERTURE	22.86 X 22.86	22.86 X 22.86				
POWER AT 632.8nm	1.5 WAVES PV	1.5 WAVES PV			DWG NO 35018	
IRREGULARITY AT 632.8nm	0.25 WAVE PV	0.25 WAVE PV				
BEVEL	PROTECTIVE AS NEEDED	PROTECTIVE AS NEEDED	ALL DIMS IN	mm	SHEET 1 OF 1	