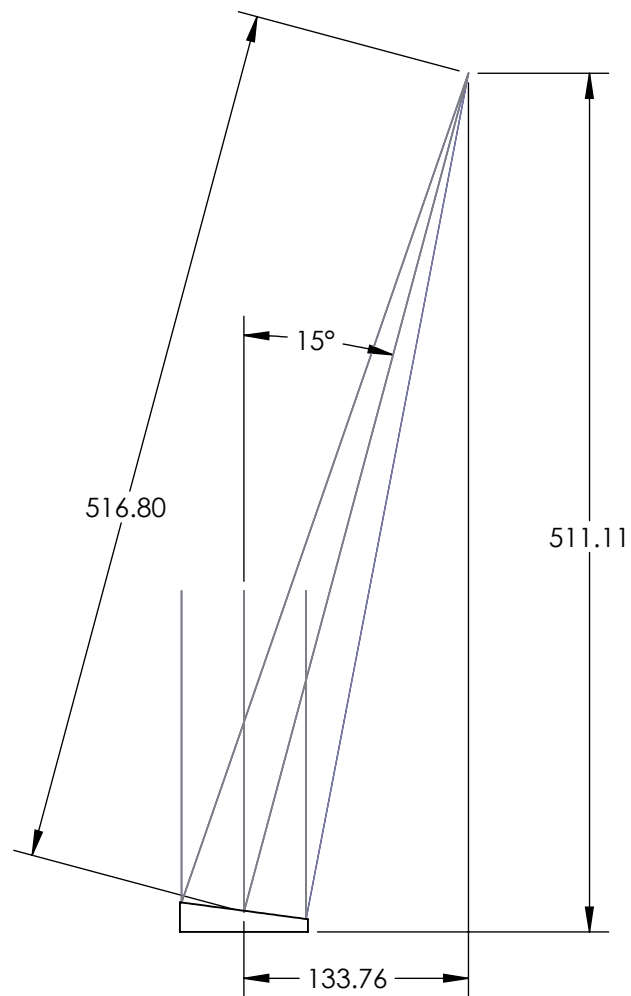
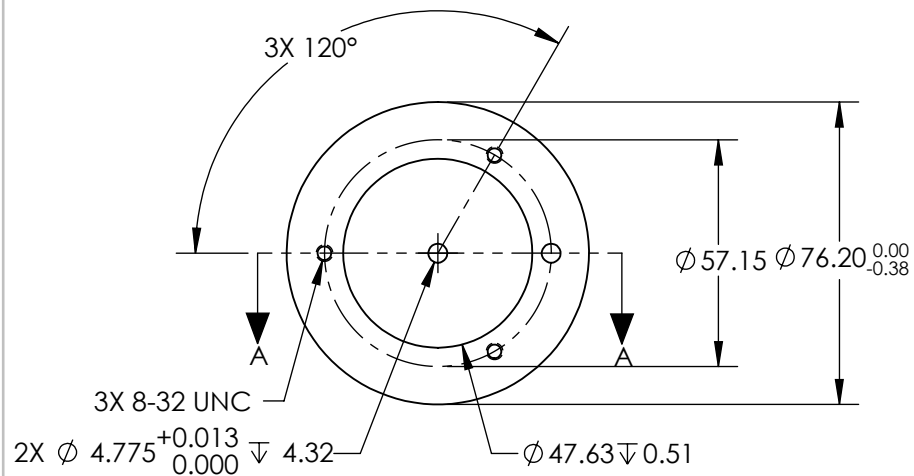
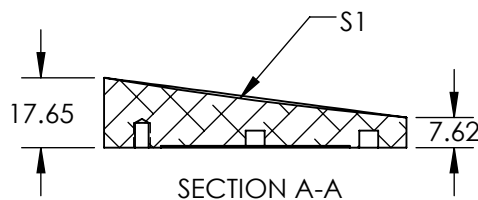


NOTES:


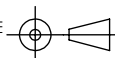
1. SUBSTRATE MATERIAL:
ALUMINUM
2. FINISH (EXCEPT SURFACE S1):
BLACK ANODIZED
3. COATING (APPLY ACROSS CLEAR APERTURE)
S1: PROTECTED ALUMINUM
R(AVG) >85% from 0.4-0.7 μ m
R(AVG) >97% from 2 - 12 μ m

SURFACE ROUGHNESS: <100 Å RMS
4. FOCAL LENGTH TOLERANCE: $\pm 1\%$
5. ROHS COMPLIANT

**FOR INFORMATION ONLY:
DO NOT MANUFACTURE
PARTS TO THIS DRAWING**



SPECIFICATIONS SUBJECT TO CHANGE WITHOUT NOTICE
DIMENSIONS ARE FOR REFERENCE ONLY

REV. A	S1	EFL	516.80	 Edmund Optics®		
SHAPE	PARABOLIC	PFL	508.00			
REFLECTIVE WAVEFRONT DISTORTION AT 632.8nm (RMS)	3/2λ	<div>THIRD ANGLE PROJECTION</div> 	TITLE	Ø76.2 X 516.8mm EFL 15° OAP PROTECTED ALUMINUM MIRROR 100Å		
SURFACE FIGURE AT 632.8nm (RMS)	3/4λ					
CLEAR APERTURE	90%					
BEVEL	PROTECTIVE AS NEEDED	ALL DIMS IN	mm	DWG NO	35596	SHEET 1 OF 1