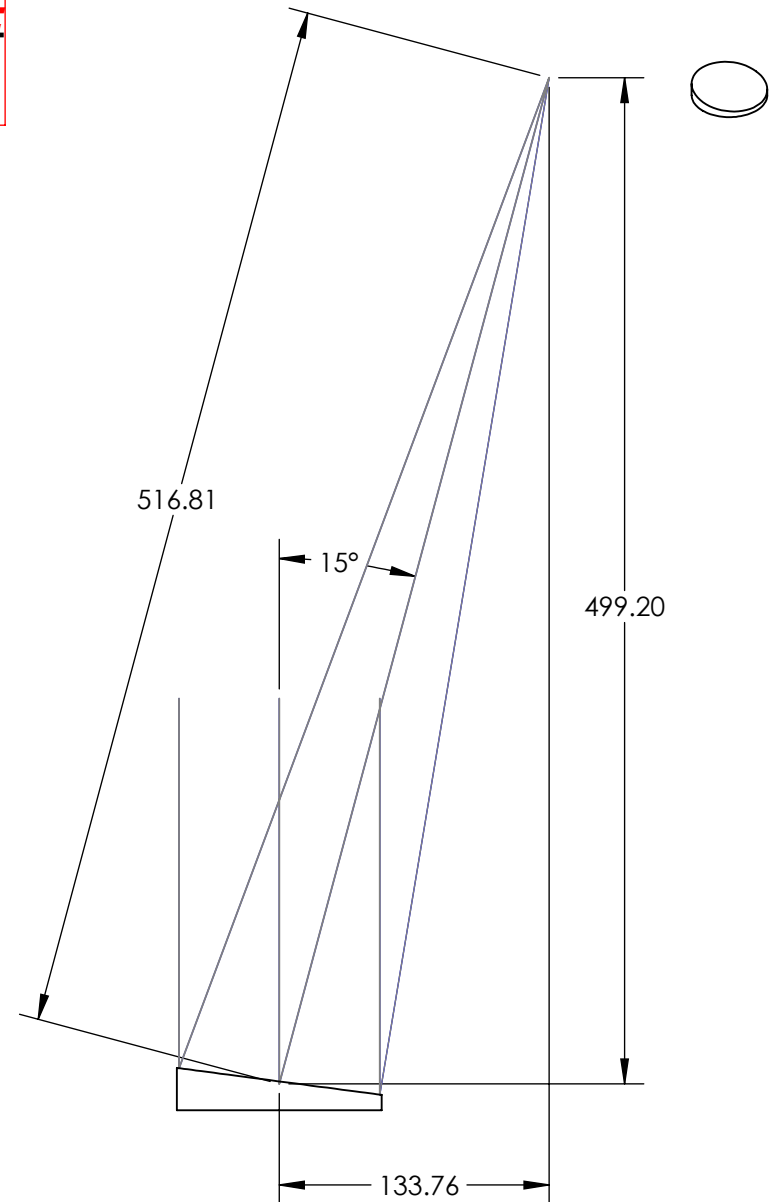
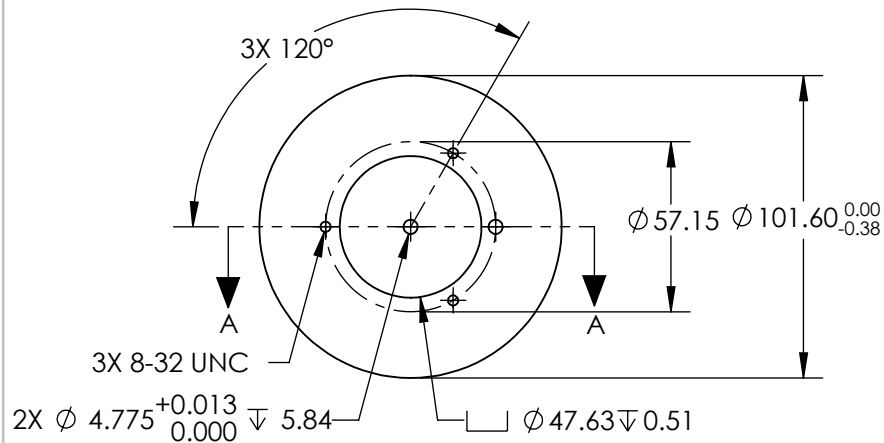
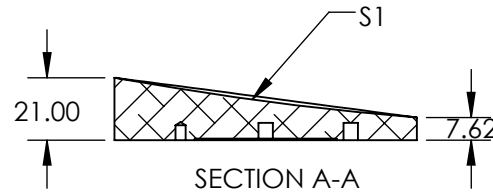


NOTES:


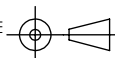
1. SUBSTRATE MATERIAL:
ALUMINUM
2. FINISH (EXCEPT SURFACE S1):
BLACK ANODIZED
3. COATING (APPLY ACROSS CLEAR APERTURE)
S1: PROTECTED ALUMINUM
R(AVG) >85% from 0.4-0.7 μ m
R(AVG) >97% from 2 - 12 μ m

SURFACE ROUGHNESS: <100 Å RMS
4. FOCAL LENGTH TOLERANCE: $\pm 1\%$
5. ROHS COMPLIANT

**FOR INFORMATION ONLY:
DO NOT MANUFACTURE
PARTS TO THIS DRAWING**



SPECIFICATIONS SUBJECT TO CHANGE WITHOUT NOTICE
DIMENSIONS ARE FOR REFERENCE ONLY

REV. A	S1	EFL	516.810	 Edmund Optics®			
SHAPE	PARABOLIC	PFL	508.00				
REFLECTIVE WAVEFRONT DISTORTION AT 632.8nm (RMS)	2λ	<div>THIRD ANGLE PROJECTION</div> 		TITLE	Ø101.6 X 516.81mm EFL 15° OAP PROTECTED ALUMINUM MIRROR 100Å		
SURFACE FIGURE AT 632.8nm (RMS)	1λ						
CLEAR APERTURE	90%	ALL DIMS IN		mm	DWG NO	35576	SHEET 1 OF 1
BEVEL	PROTECTIVE AS NEEDED						