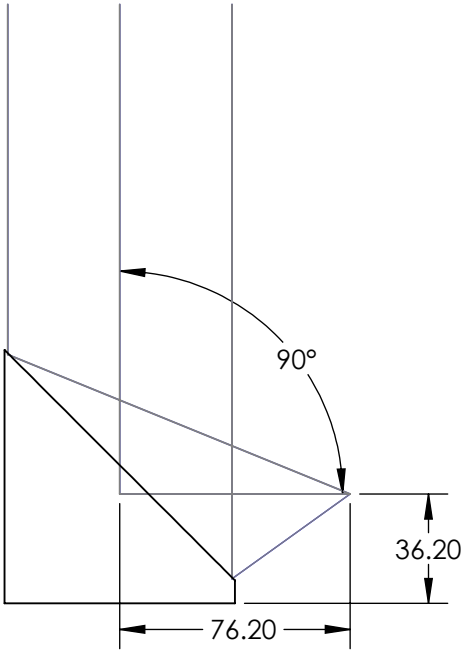
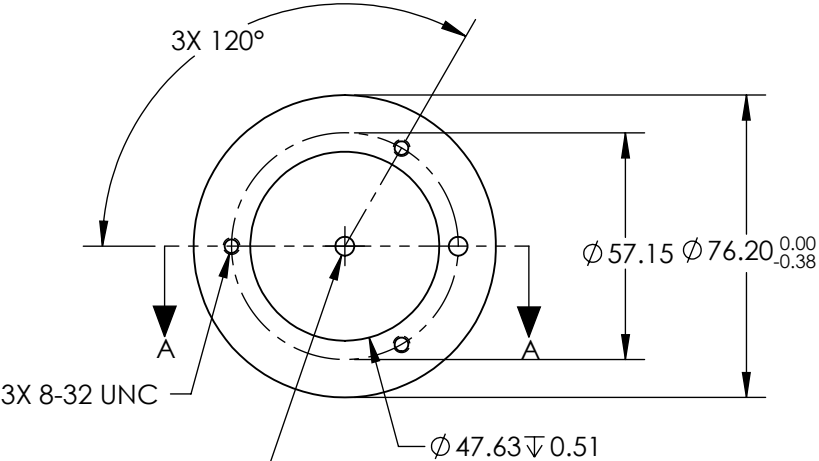
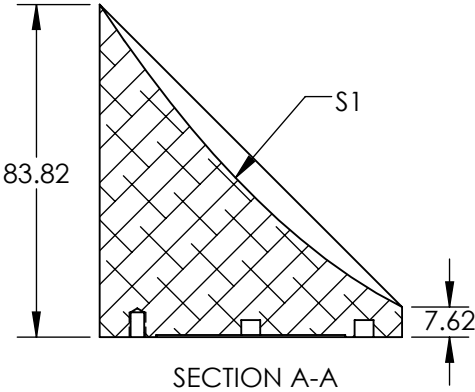


NOTES:

- 1. SUBSTRATE MATERIAL:
ALUMINUM
- 2. FINISH (EXCEPT SURFACE S1):
BLACK ANODIZED
- 3. COATING (APPLY ACROSS CLEAR APERTURE)
S1: PROTECTED GOLD
R(AVG) >94% @ 0.7-0.8µm
R(AVG) >97% @ 0.8-2.0µm
R(AVG) >98% @ 2-12µm


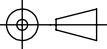
SURFACE ROUGHNESS: <100 Å RMS
- 4. FOCAL LENGTH TOLERANCE: ±1%
- 5. ROHS COMPLIANT

**FOR INFORMATION ONLY:
DO NOT MANUFACTURE
PARTS TO THIS DRAWING**



2X Ø 4.775^{+0.013}_{-0.32}

SPECIFICATIONS SUBJECT TO CHANGE WITHOUT NOTICE
DIMENSIONS ARE FOR REFERENCE ONLY

REV. A	S1	EFL	76.20	 Edmund Optics®		
SHAPE	PARABOLIC	PFL	38.10			
REFLECTIVE WAVEFRONT DISTORTION AT 632.8nm (RMS)	3/2λ	THIRD ANGLE PROJECTION 	TITLE	Ø76.2 X 76.2mm EFL 90° OAP PROTECTED GOLD MIRROR 100Å		
SURFACE FIGURE AT 632.8nm (RMS)	3/4λ					
CLEAR APERTURE	90%	ALL DIMS IN	mm	DWG NO	35534	SHEET 1 OF 1
BEVEL	PROTECTIVE AS NEEDED					