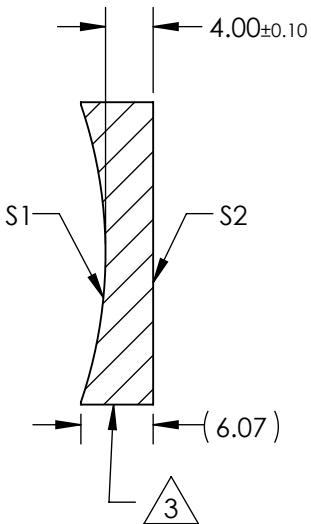
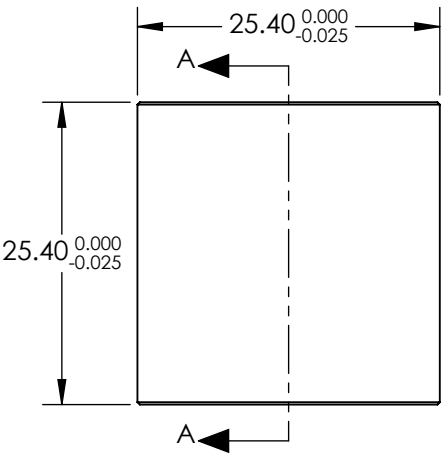



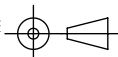
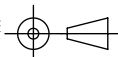
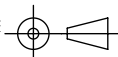
NOTES:

1. SUBSTRATE MATERIAL:
N-BK7
2. COATING (APPLY ACROSS CLEAR APERTURE)
S1 & S2:
NIR II
 $R(ABS) \leq 1.5\%$ FROM 750-800nm @ 0° AOI
 $R(ABS) \leq 1.0\%$ FROM 800-1550nm @ 0° AOI
 $R(AVG) \leq 0.7\%$ FROM 750-1550nm @ 0° AOI
3. FINE GROUND SURFACE
4. POWER, IRREGULARITY, AND SURFACE QUALITY
SPECIFICAIONS APPLY ACROSS CLEAR APERTURE
5. FOCAL LENGTH TOLERANCE: $\pm 1\%$
6. PLANO AXIS WEDGE TOLERANCE: < 5 ARCMIN
POWER AXIS WEDGE TOLERANCE: < 5 ARCMIN
AXIAL TWIST ANGLE: < 3 ARCMIN
7. RoHS COMPLIANT



SECTION A-A

**FOR INFORMATION ONLY:
DO NOT MANUFACTURE
PARTS TO THIS DRAWING**

REV. A	S1	S2	SPECIFICATIONS SUBJECT TO CHANGE WITHOUT NOTICE DIMENSIONS ARE FOR REFERENCE ONLY			
SHAPE	CONCAVE	PLANO	EFL	(-75)mm	 Edmund Optics®	
RADIUS	38.76	∞	BFL	(-77.64)mm		
SURFACE QUALITY	40 - 20	40 - 20			TITLE	LENS CYL SHAPING 25.4 x 25.4 x -75 FL NIR II
CLEAR APERTURE	22.86 x 22.86	22.86 x 22.86			DWG NO	35019
COATING APERTURE	22.86 x 22.86	22.86 x 22.86			SHEET 1 OF 1	
POWER AT 632.8nm	1.5 WAVES PV	1.5 WAVES PV				
IRREGULARITY AT 632.8nm	0.25 WAVE PV	0.25 WAVE PV			SHEET 1 OF 1	
BEVEL	PROTECTIVE AS NEEDED	PROTECTIVE AS NEEDED				