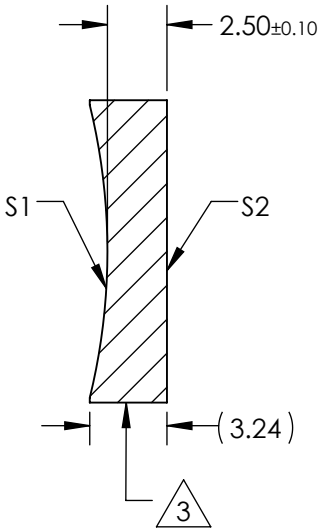
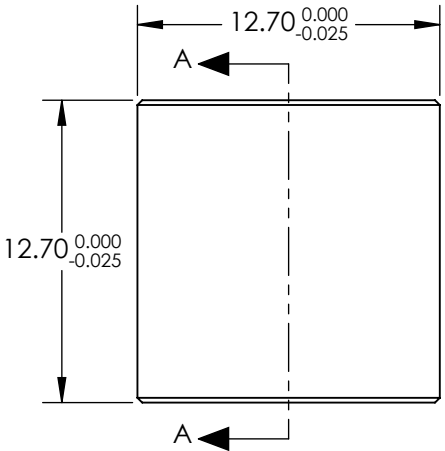


NOTES:

1. SUBSTRATE MATERIAL:
N-BK7
2. COATING (APPLY ACROSS CLEAR APERTURE)
S1 & S2:
VIS 0
 $R(AVG) \leq 0.4\%$ FROM 425-675nm @ 0° AOI


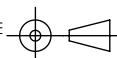
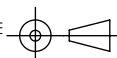
3. FINE GROUND SURFACE

4. POWER, IRREGULARITY, AND SURFACE QUALITY SPECIFICAIONS APPLY ACROSS CLEAR APERTURE
5. FOCAL LENGTH TOLERANCE: $\pm 1\%$
6. PLANO AXIS WEDGE TOLERANCE: < 5 ARCMIN
POWER AXIS WEDGE TOLERANCE: < 5 ARCMIN
AXIAL TWIST ANGLE: < 3 ARCMIN
7. RoHS COMPLIANT



SECTION A-A

**FOR INFORMATION ONLY:
DO NOT MANUFACTURE
PARTS TO THIS DRAWING**

REV. A	S1	S2	SPECIFICATIONS SUBJECT TO CHANGE WITHOUT NOTICE DIMENSIONS ARE FOR REFERENCE ONLY			
SHAPE	CONCAVE	PLANO				
RADIUS	25.84	∞	EFL	-50mm	 Edmund Optics®	
SURFACE QUALITY	40 - 20	40 - 20	BFL	-51.65mm		
CLEAR APERTURE	11.43 x 11.43	11.43 x 11.43			TITLE	LENS CYL SHAPING 12.7 x 12.7mm X -50mm FL VIS 0
COATING APERTURE	11.43 x 11.43	11.43 x 11.43				
POWER AT 632.8nm	1.5 WAVES PV	1.5 WAVES PV			DWG NO	34993
IRREGULARITY AT 632.8nm	0.25 WAVE PV	0.25 WAVE PV				
BEVEL	PROTECTIVE AS NEEDED	PROTECTIVE AS NEEDED	ALL DIMS IN	mm	SHEET 1 OF 1	