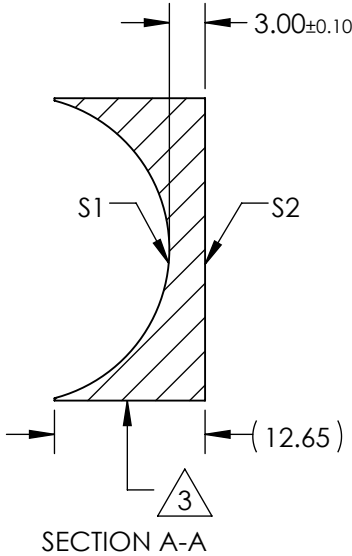
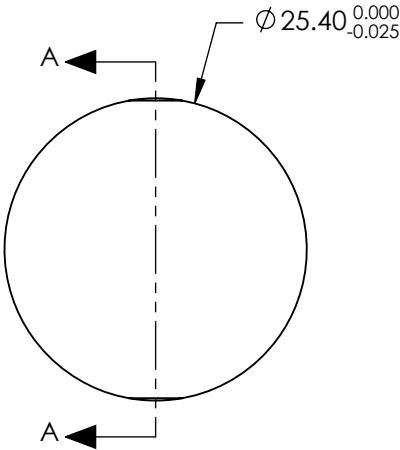


NOTES:

1. SUBSTRATE MATERIAL:
N-BK7
2. COATING (APPLY ACROSS CLEAR APERTURE)
S1 & S2:
NIR I
 $R(AVG) \leq 0.5\%$ FROM 600-1050nm @ 0° AOI

3. FINE GROUND SURFACE


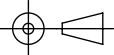
4. POWER, IRREGULARITY, AND SURFACE QUALITY SPECIFICAIONS APPLY ACROSS CLEAR APERTURE
5. FOCAL LENGTH TOLERANCE: $\pm 1\%$
6. PLANO AXIS WEDGE TOLERANCE: < 5 ARCMIN
POWER AXIS WEDGE TOLERANCE: < 5 ARCMIN
7. RoHS COMPLIANT



**FOR INFORMATION ONLY:
DO NOT MANUFACTURE
PARTS TO THIS DRAWING**

REV. A	S1	S2
SHAPE	CONCAVE	PLANO
RADIUS	12.92	∞
SURFACE QUALITY	40 - 20	40 - 20
CLEAR APERTURE	$\varnothing 22.86$	$\varnothing 22.86$
COATING APERTURE	$\varnothing 22.86$	$\varnothing 22.86$
POWER AT 632.8nm	1.5 WAVES PV	1.5 WAVES PV
IRREGULARITY AT 632.8nm	0.25 WAVE PV	0.25 WAVE PV
BEVEL	PROTECTIVE AS NEEDED	PROTECTIVE AS NEEDED

SPECIFICATIONS SUBJECT TO CHANGE WITHOUT NOTICE
DIMENSIONS ARE FOR REFERENCE ONLY

EFL	-25mm	 Edmund Optics®		
BFL	-26.978mm			
THIRD ANGLE PROJECTION 	TITLE	LENS CYL SHAPING 25.4mm DIA. X -25mm FL NIR I		
		DWG NO	34682	SHEET 1 OF 1
ALL DIMS IN	mm			