

NOTES:

1. SUBSTRATE:  
Fused Silica
2. SURFACE S2 TO BE PARALLEL TO SURFACE S1 TO WITHIN <5 ARCMIN
3. COATING (APPLY ACROSS COATING APERTURE):

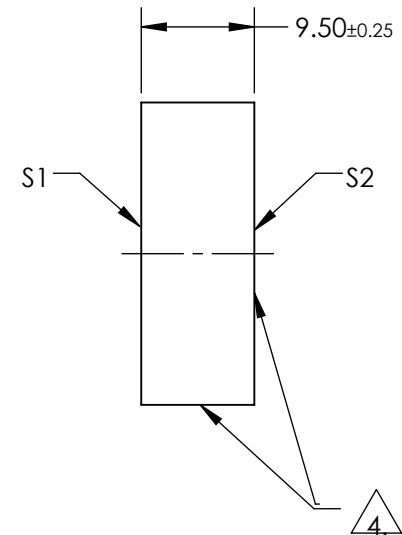
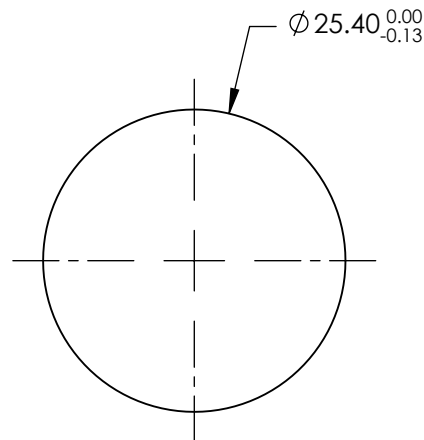
S1: Nd:YAG Laser  
R(ABS) >99% @ 266nm @ 0° AOI

DAMAGE THRESHOLD:  
PULSED: 2.5 J/cm² @ 266nm, 10ns, 20Hz

S2: NONE

4. FINE GRIND SURFACE

5. SURFACE QUALITY SPECIFICATIONS APPLY ACROSS CLEAR APERTURE
6. CLEAR APERTURE AND COATING APERTURE ARE CENTERED ON SURFACES
7. ROHS COMPLIANT



**FOR INFORMATION ONLY:  
DO NOT MANUFACTURE  
PARTS TO THIS DRAWING**

SPECIFICATIONS SUBJECT TO CHANGE WITHOUT NOTICE  
DIMENSIONS ARE FOR REFERENCE ONLY

|                  | S1                   | S2                   |
|------------------|----------------------|----------------------|
| SHAPE            | PLANO                | PLANO                |
| SURFACE FLATNESS | $\lambda/6$          | N/A                  |
| SURFACE QUALITY  | 10-5                 | COMMERCIAL POLISH    |
| CLEAR APERTURE   | 85%                  | N/A                  |
| BEVEL            | PROTECTIVE AS NEEDED | PROTECTIVE AS NEEDED |



ALL DIMS IN mm

**EO**® Edmund Optics®

TITLE

25.4mm Dia. 266nm 0° Nd:YAG Laser Line  
Mirror

DWG NO

36323

SHEET  
1 OF 1