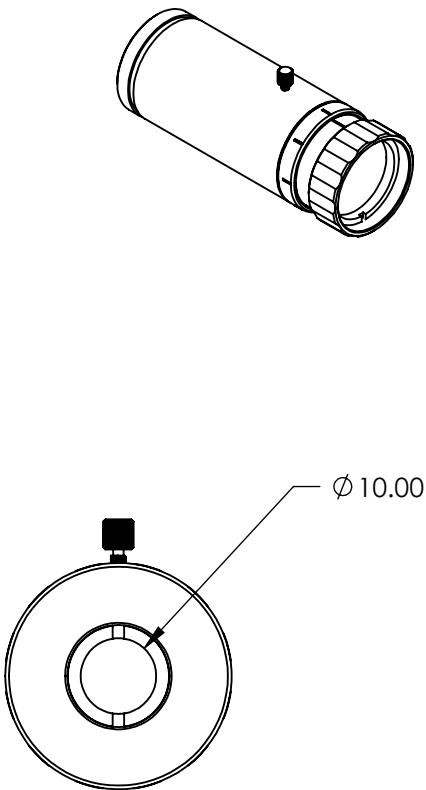
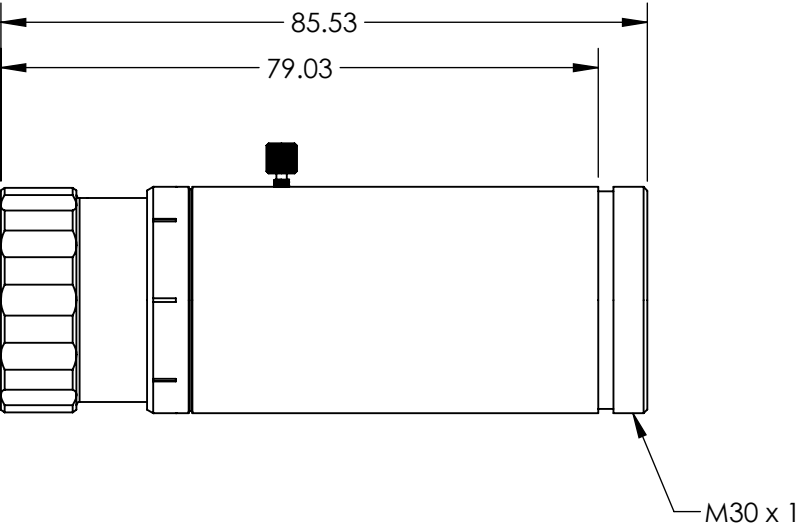
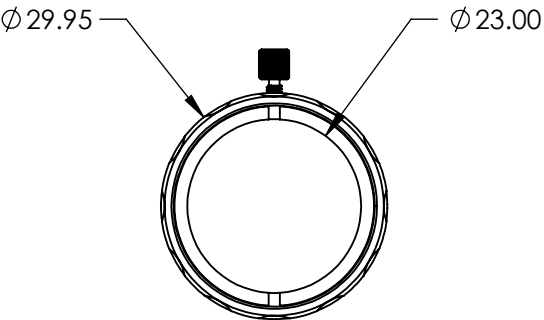


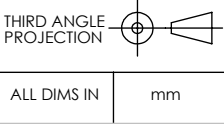
- NOTES:
- 1. COATING (APPLY ACROSS CLEAR APERTURE)
LASER V-COAT
 $R(ABS) \leq 0.25\% @ 532nm$
 - 2. RoHS: COMPLIANT



**FOR INFORMATION ONLY:
DO NOT MANUFACTURE
PARTS TO THIS DRAWING**

SPECIFICATIONS SUBJECT TO CHANGE WITHOUT NOTICE
DIMENSIONS ARE FOR REFERENCE ONLY

DAMAGE THRESHOLD (PULSED)	5J/cm ² @ 10ns, 20Hz, 532nm
DESIGN WAVELENGTH DWL (nm)	532
EXPANSION POWER	3X
TRANSMISSION (%)	> 99 (NOMINAL)
NOMINAL PERFORMANCE	<λ/10 FOR 3.4mm INPUT BEAM (NOMINAL)



Edmund Optics®

TITLE	3X532nm VEGA™ Nd:YAG LASER LINE BEAM EXPANDER
DWG NO	35098
SHEET	1 OF 1