

NOTES:

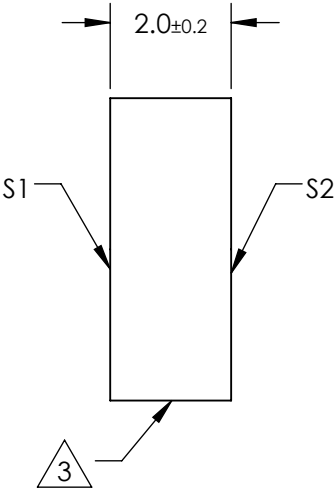
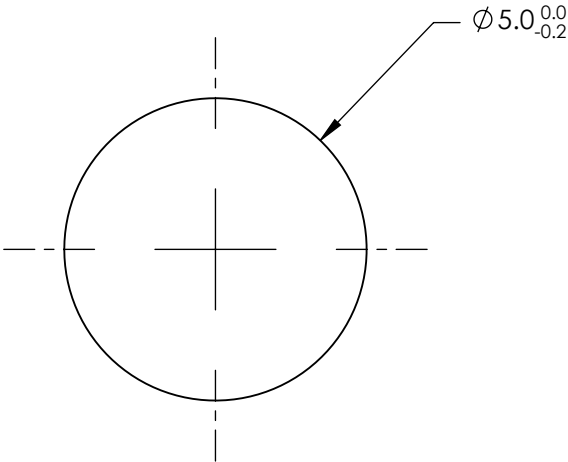
1. SUBSTRATE MATERIAL:
FUSED SILICA
2. COATING (APPLY ACROSS CLEAR APERTURE)

S1: Broadband Dielectric
R(avg) >98% @ 750 - 1100nm (0 - 45°) ALL POLARIZATIONS
R(avg) >99% @ 750 - 1100nm (0°) ALL POLARIZATIONS
S2: NONE

 FINE GROUND SURFACE

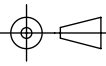

4. RoHS COMPLIANT

**FOR INFORMATION ONLY:
DO NOT MANUFACTURE
PARTS TO THIS DRAWING**



SPECIFICATIONS SUBJECT TO CHANGE WITHOUT NOTICE
DIMENSIONS ARE FOR REFERENCE ONLY

REV. A	S1	S2
SHAPE	PLANO	PLANO
CLEAR APERTURE (%)	90	N/A
SURFACE QUALITY	20-10	COMMERCIAL POLISH
SURFACE FLATNESS	λ/10	N/A
BEVEL	PROTECTIVE AS NEEDED	PROTECTIVE AS NEEDED

THIRD ANGLE PROJECTION 		 Edmund Optics®	
TITLE		Ø5mm, 750 - 1100nm BROADBAND λ/10 MIRROR	
ALL DIMS IN	mm	DWG NO	SHEET 1 OF 1
		87376	