

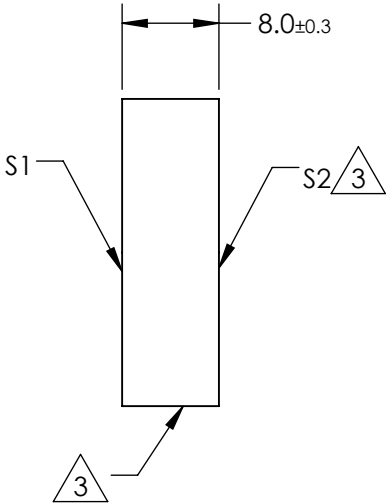
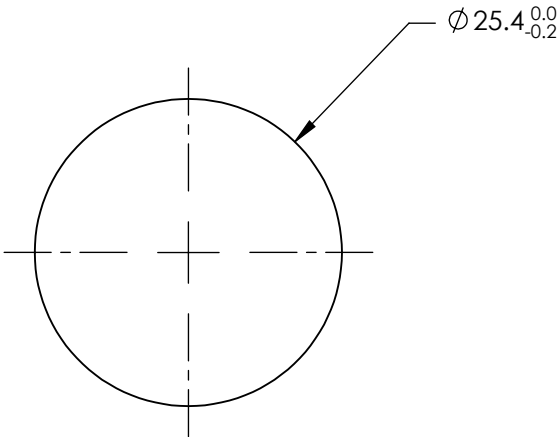
NOTES:

1. SUBSTRATE MATERIAL:
BOROFLOAT®
2. COATING (APPLY ACROSS CLEAR APERTURE)

S1: VIS Laser
R(avg) >99% @ 400 - 700nm @ 0° - 45° ANGLE OF INCIDENCE
DAMAGE THRESHOLD (PULSED): 1 J/cm² @ 10ns
DAMAGE THRESHOLD (CW): 500 kW/cm² @ 355nm
DURABILITY: MIL-M13508-C
S2: NONE

3. FINE GROUND SURFACE

4. RoHS COMPLIANT



SPECIFICATIONS SUBJECT TO CHANGE WITHOUT NOTICE
DIMENSIONS ARE FOR REFERENCE ONLY

REV. A	S1	S2
SHAPE	PLANO	PLANO
CLEAR APERTURE (%)	>80	N/A
SURFACE QUALITY	20-10	N/A
SURFACE FLATNESS	$\lambda/20$	N/A
BEVEL	PROTECTIVE AS NEEDED	PROTECTIVE AS NEEDED

THIRD ANGLE PROJECTION		Edmund Optics®	
ALL DIMS IN		TITLE	25.4mm Dia. VIS, Precision Broadband Laser Mirror
mm		DWG NO	45596
			SHEET 1 OF 1