

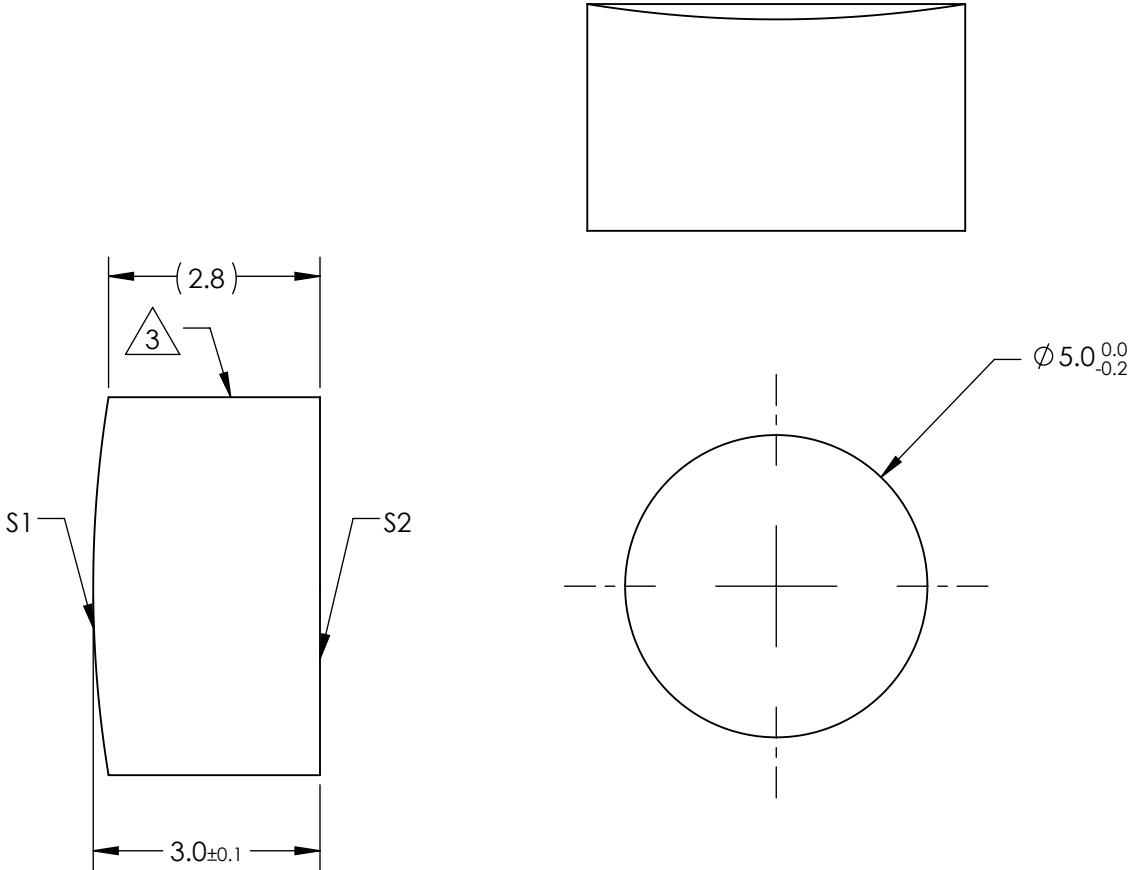
NOTES:

- 1. SUBSTRATE MATERIAL:
N-BK7
- 2. COATING (APPLY ACROSS CLEAR APERTURE)


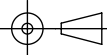
S1 & S2: NIR I

 $R(avg) \leq 0.5\% @ 600 - 1050nm$
- 3. FINE GROUND SURFACE
- 4. POWER, IRREGULARITY, AND SURFACE QUALITY SPECIFICAIONS APPLY ACROSS CLEAR APERTURE
- 5. RoHS COMPLIANT

**FOR INFORMATION ONLY:
DO NOT MANUFACTURE
PARTS TO THIS DRAWING**



SPECIFICATIONS SUBJECT TO CHANGE WITHOUT NOTICE
DIMENSIONS ARE FOR REFERENCE ONLY

REV. A	S1	S2	EFL	30	 Edmund Optics®		
SHAPE	CONVEX	PLANO	BFL	28.02			
RADIUS	15.5	∞			TITLE	5mm DIA X 30mm FL NIR I COATED, CYLINDER LENS	
SURFACE QUALITY	60-40	60-40					
CLEAR APERTURE	$\varnothing 4.00$	$\varnothing 4.00$	ALL DIMS IN		DWG NO	69702	
COATING APERTURE	$\varnothing 4.00$	$\varnothing 4.00$					
BEVEL	PROTECTED AS NEEDED	PROTECTED AS NEEDED	mm				SHEET 1 OF 1