

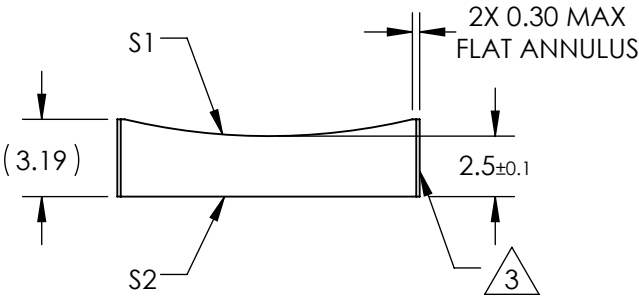
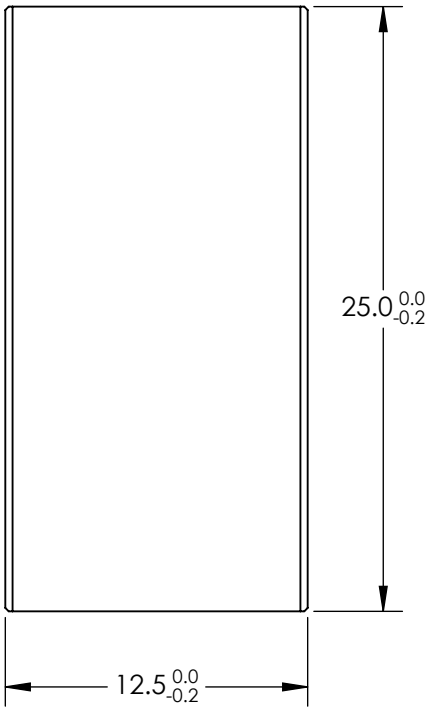
NOTES:

- 1. SUBSTRATE MATERIAL:  
N-BK7
- 2. COATING (APPLY ACROSS CLEAR APERTURE)  
  
S1 & S2: NIR I  
  
R(avg)  $\leq 0.5\%$  @ 600 - 1050nm


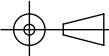
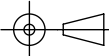
3. FINE GROUND SURFACE

- 4. POWER, IRREGULARITY, AND SURFACE QUALITY  
SPECIFICAIONS APPLY ACROSS CLEAR APERTURE
- 5. RoHS COMPLIANT

**FOR INFORMATION ONLY:  
DO NOT MANUFACTURE  
PARTS TO THIS DRAWING**



SPECIFICATIONS SUBJECT TO CHANGE WITHOUT NOTICE  
DIMENSIONS ARE FOR REFERENCE ONLY

REV. A	S1	S2	 Edmund Optics®						
SHAPE	CONVEX	PLANO						EFL	-50
RADIUS	25.84	∞	BFL	-51.65					
SURFACE QUALITY	60-40	60-40							
CLEAR APERTURE	11.50 X 24.00	11.50 X 24.00			TITLE	12.5mm H X 25mm L X -50mm FL NIR I COATED, CYLINDER LENS			
COATING APERTURE	11.50 X 24.00	11.50 X 24.00							
BEVEL	PROTECTED AS NEEDED	PROTECTED AS NEEDED	ALL DIMS IN	mm	DWG NO	69819		SHEET 1 OF 1	