

NOTES:

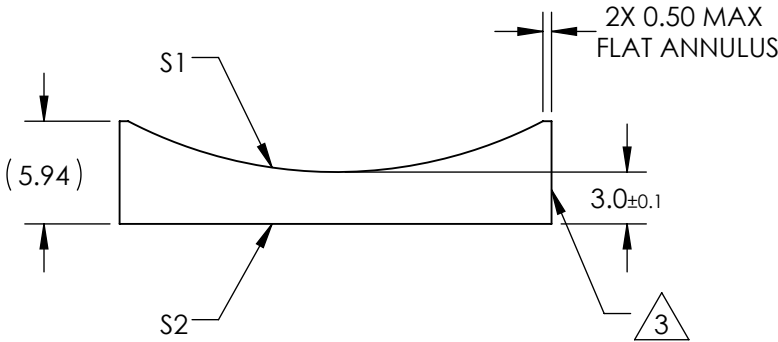
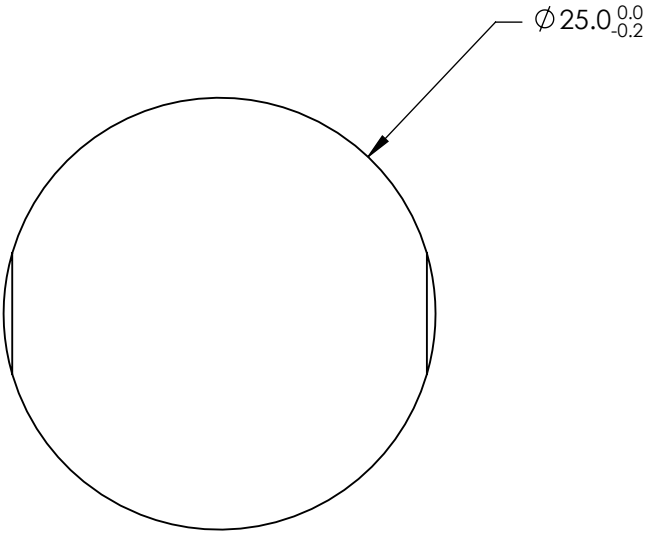
1. SUBSTRATE MATERIAL:  
N-BK7
2. COATING (APPLY ACROSS CLEAR APERTURE)

S1 & S2: VIS-NIR

R(abs) ≤0.25% @ 880nm  
R(avg) ≤1.25% @ 400 - 870nm  
R(avg) ≤1.25% @ 890 - 1000nm


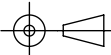
3. FINE GROUND SURFACE

4. POWER, IRREGULARITY, AND SURFACE QUALITY  
SPECIFICAIONS APPLY ACROSS CLEAR APERTURE
5. RoHS COMPLIANT



**FOR INFORMATION ONLY:  
DO NOT MANUFACTURE  
PARTS TO THIS DRAWING**

SPECIFICATIONS SUBJECT TO CHANGE WITHOUT NOTICE  
DIMENSIONS ARE FOR REFERENCE ONLY

REV. A	S1	S2	 Edmund Optics®				
SHAPE	CONVEX	PLANO					
RADIUS	-25.93	∞	EFL	-50	BFL	-51.97	
SURFACE QUALITY	60-40	60-40			TITLE	25mm DIA X -50mm FL VIS-NIR COATED, CYLINDER LENS	
CLEAR APERTURE	Ø24.00	Ø24.00					
COATING APERTURE	Ø24.00	Ø24.00					
BEVEL	PROTECTED AS NEEDED	PROTECTED AS NEEDED	ALL DIMS IN	mm	DWG NO	69843	SHEET 1 OF 1