

NOTES:

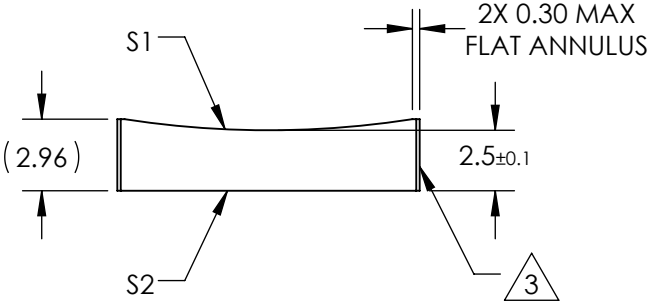
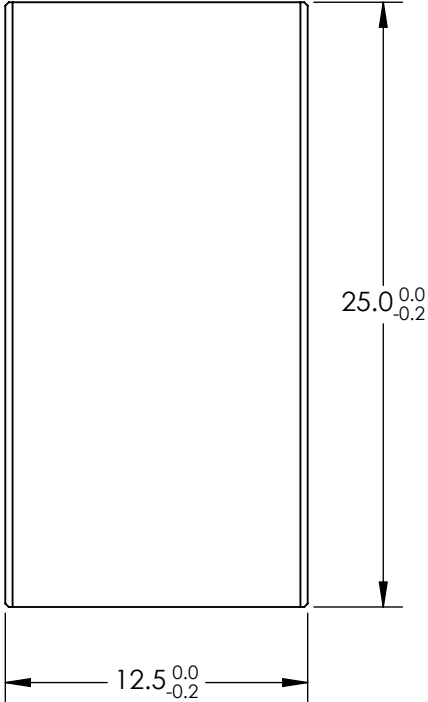
1. SUBSTRATE MATERIAL:  
N-BK7
2. COATING (APPLY ACROSS CLEAR APERTURE)

S1 & S2: VIS-NIR

R(abs)  $\leq 0.25\%$  @ 880nm  
R(avg)  $\leq 1.25\%$  @ 400 - 870nm  
R(avg)  $\leq 1.25\%$  @ 890 - 1000nm


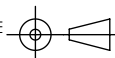
3. FINE GROUND SURFACE

4. POWER, IRREGULARITY, AND SURFACE QUALITY  
SPECIFICATIONS APPLY ACROSS CLEAR APERTURE
5. RoHS COMPLIANT



**FOR INFORMATION ONLY:  
DO NOT MANUFACTURE  
PARTS TO THIS DRAWING**

SPECIFICATIONS SUBJECT TO CHANGE WITHOUT NOTICE  
DIMENSIONS ARE FOR REFERENCE ONLY

REV. A	S1	S2	<div><div>EFL</div><div>-75</div></div> <div><div>BFL</div><div>-76.7</div></div> <div><div> Edmund Optics®</div></div>					
SHAPE	CONVEX	PLANO						
RADIUS	38.76	∞						
SURFACE QUALITY	60-40	60-40	<div><div>THIRD ANGLE PROJECTION</div><div></div></div>		TITLE	12.5mm H X 25mm L X -75mm FL VIS-NIR COATED, CYLINDER LENS		
CLEAR APERTURE	11.50 X 24.00	11.50 X 24.00						
COATING APERTURE	11.50 X 24.00	11.50 X 24.00						
BEVEL	PROTECTED AS NEEDED	PROTECTED AS NEEDED	ALL DIMS IN	mm	DWG NO	69840	SHEET 1 OF 1	