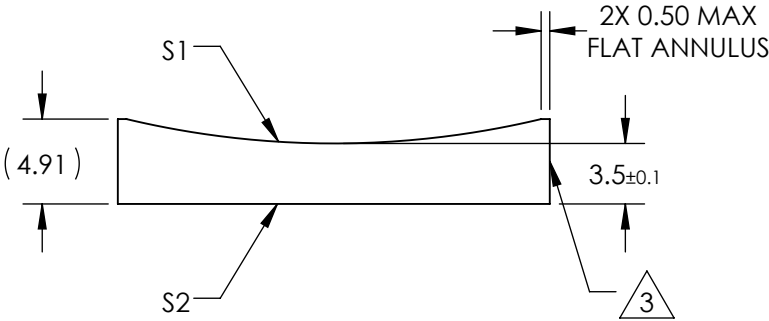
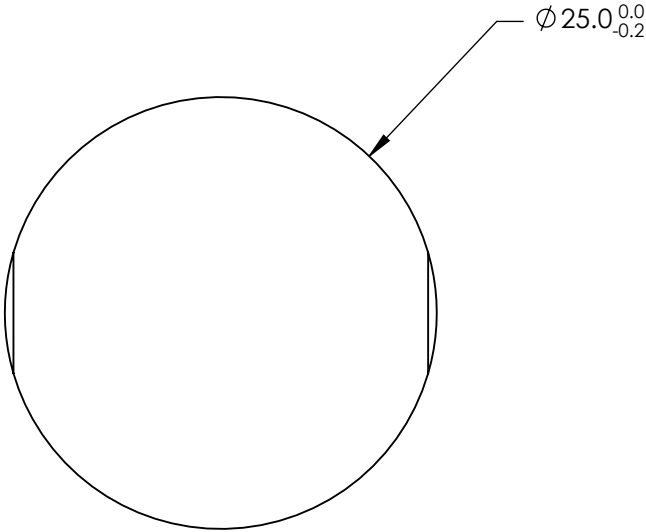


NOTES:

1. SUBSTRATE MATERIAL:
N-BK7
2. COATING (APPLY ACROSS CLEAR APERTURE)
- S1 & S2: UNCOATED
- 0


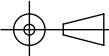
3. FINE GROUND SURFACE

4. POWER, IRREGULARITY, AND SURFACE QUALITY
SPECIFICAIONS APPLY ACROSS CLEAR APERTURE
5. RoHS COMPLIANT



**FOR INFORMATION ONLY:
DO NOT MANUFACTURE
PARTS TO THIS DRAWING**

SPECIFICATIONS SUBJECT TO CHANGE WITHOUT NOTICE
DIMENSIONS ARE FOR REFERENCE ONLY

REV. A	S1	S2	 Edmund Optics®				
SHAPE	CONVEX	PLANO					
RADIUS	-51.68	∞	EFL	-100	BFL	-102.31	
SURFACE QUALITY	60-40	60-40			TITLE	25mm DIA X -100mm FL UNCOATED, CYLINDER LENS	
CLEAR APERTURE	Ø24.00	Ø24.00					
COATING APERTURE	Ø24.00	Ø24.00					
BEVEL	PROTECTED AS NEEDED	PROTECTED AS NEEDED	ALL DIMS IN	mm	DWG NO	47753	SHEET 1 OF 1