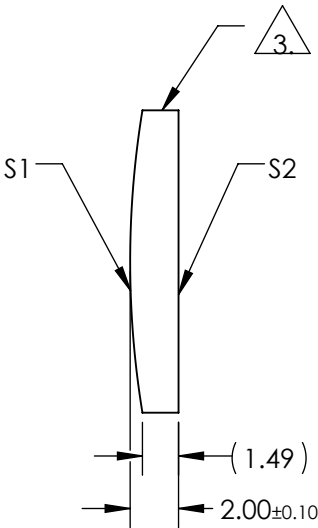
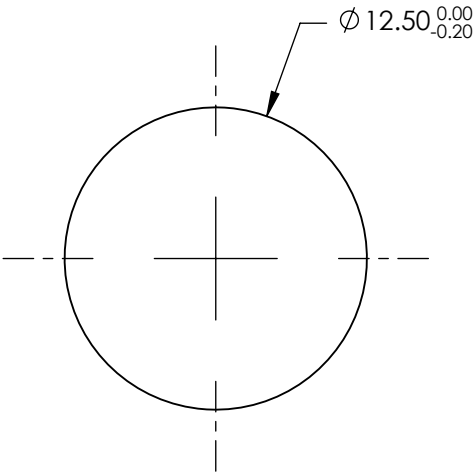


NOTES:

1. SUBSTRATE MATERIAL:
N-BK7
2. COATING (APPLY ACROSS CLEAR APERTURE)
- S1 & S2: NIR I (600-1050nm)
R(AVG) ≤0.5% @ 600 - 1050nm
3. FINE GROUND SURFACE
4. RoHS COMPLIANT



**FOR INFORMATION ONLY:
DO NOT MANUFACTURE
PARTS TO THIS DRAWING**

SPECIFICATIONS SUBJECT TO CHANGE WITHOUT NOTICE
DIMENSIONS ARE FOR REFERENCE ONLY

	S1	S2	EFL	75.00	 Edmund Optics®		
SHAPE	CONVEX	PLANO	BFL	73.68			
RADIUS	38.76	INFINITY			TITLE	12.5mm DIA X 75mm FL NIR I COATED, CYLINDER LENS	
SURFACE QUALITY	60-40	60-40					
CLEAR APERTURE	Ø11.50	Ø11.50			DWG NO	69745	
BEVEL	PROTECTIVE AS NEEDED	PROTECTIVE AS NEEDED					
			ALL DIMS IN	mm			
						SHEET 1 OF 1	