

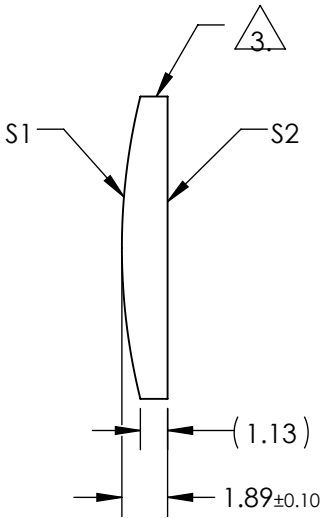
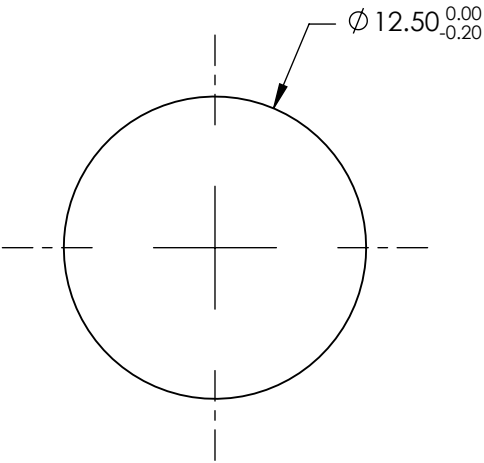
NOTES:

1. SUBSTRATE MATERIAL:  
N-BK7
2. COATING (APPLY ACROSS CLEAR APERTURE)

S1 & S2: VIS-NIR (400-1000nm)  
R(ABS)  $\leq 0.25\%$  @ 880nm  
R(AVG)  $\leq 1.25\%$  @ 400 - 870nm  
R(AVG)  $\leq 1.25\%$  @ 890 - 1000nm

3. FINE GROUND SURFACE

4. RoHS COMPLIANT



**FOR INFORMATION ONLY:  
DO NOT MANUFACTURE  
PARTS TO THIS DRAWING**

SPECIFICATIONS SUBJECT TO CHANGE WITHOUT NOTICE  
DIMENSIONS ARE FOR REFERENCE ONLY

	S1	S2	EFL	50.00	 <b>Edmund Optics®</b>	
SHAPE	CONVEX	PLANO	BFL	48.75		
RADIUS	25.93	INFINITY			TITLE	12.5mm DIA X 50mm FL VIS-NIR COATED, CYLINDER LENS
SURFACE QUALITY	60-40	60-40				
CLEAR APERTURE	Ø11.50	Ø11.50	ALL DIMS IN	mm	DWG NO	69770
BEVEL	PROTECTIVE AS NEEDED	PROTECTIVE AS NEEDED				SHEET 1 OF 1