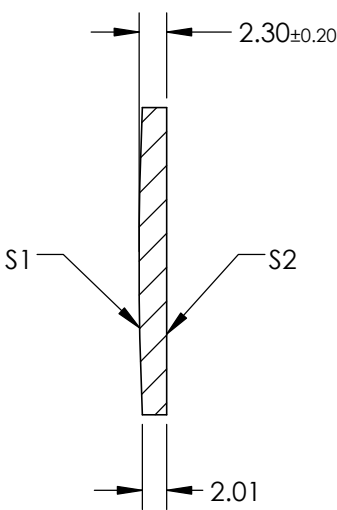
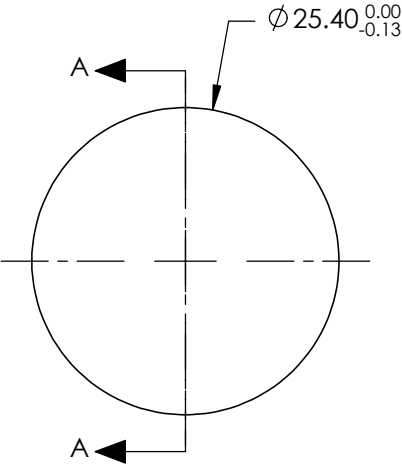


NOTES:

- 1. SUBSTRATE: ZINC SELENIDE (ZNSE)
- 2. COATING (APPLY ACROSS COATING APERTURE)
S1: R(avg) ≤0.5% @ 7.5 - 13.5µm
S2: R(avg) ≤0.5% @ 7.5 - 13.5µm
- 3. EDGES DIAMOND TURNED
- 4. FOCAL LENGTH TOLERANCE (%): ±2 @ DWL
- 5. RoHS COMPLIANT



SECTION A-A

**FOR INFORMATION ONLY:
DO NOT MANUFACTURE
PARTS TO THIS DRAWING**

SPECIFICATIONS SUBJECT TO CHANGE WITHOUT NOTICE
DIMENSIONS ARE FOR REFERENCE ONLY

	S1	S2	EFL @ 10.6μm	200	 Edmund Optics®			
SHAPE	CONVEX	PLANO	BFL @ 10.6μm	199.52				
RADIUS	281.2	∞			TITLE	25.4mm DIA. X 200.0mm FL, 8-12μm AR COATED, ZNSE PLANO-CONVEX LENS		
SURFACE QUALITY	60-40	60-40						
CLEAR APERTURE	90%	90%			DWG NO	88006	SHEET 1 OF 1	
BEVEL	PROTECTIVE AS NEEDED	PROTECTIVE AS NEEDED						
			ALL DIMS IN	mm				