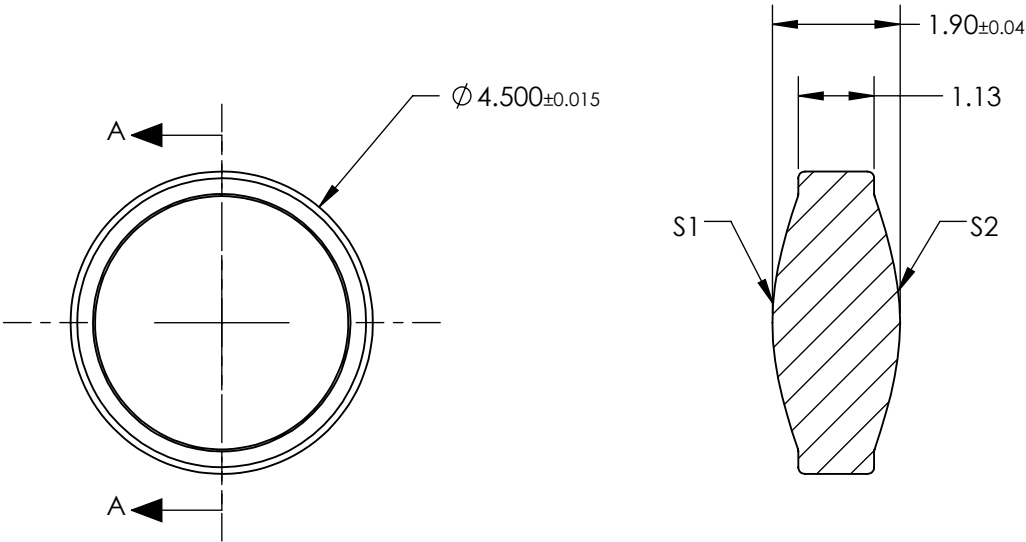


NOTES:

- 1. SUBSTRATE:  
D-ZLAF52LA
- 2. NUMERICAL APERTURE: 0.55
- 3. COATING  
S1 & S2: R(AVG) ≤ 0.5% @ 350 - 700nm
- 4. FOCAL LENGTH TOLERANCE: ±1%
- 5. TRANSMITTED WAVEFRONT ERROR (λ, RMS): < 1.300


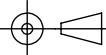


SECTION A-A

**FOR INFORMATION ONLY:  
DO NOT MANUFACTURE  
PARTS TO THIS DRAWING**

SPECIFICATIONS SUBJECT TO CHANGE WITHOUT NOTICE DIMENSIONS ARE FOR REFERENCE ONLY

	S1	S2
SHAPE	CONVEX	CONVEX
SURFACE QUALITY	40-20	40-20
CLEAR APERTURE	Ø3.60	Ø3.60
BEVEL MAX	PROTECTIVE AS NEEDED	PROTECTIVE AS NEEDED

EFL	2.75	 <b>Edmund Optics®</b>		
BFL	2.16			
THIRD ANGLE PROJECTION 	TITLE	0.55 NA 2.75mm FL 350-700nm AR COATED, MOLDED ASPHERIC LENS		
ALL DIMS IN	mm	DWG NO	83616	SHEET 1 OF 1