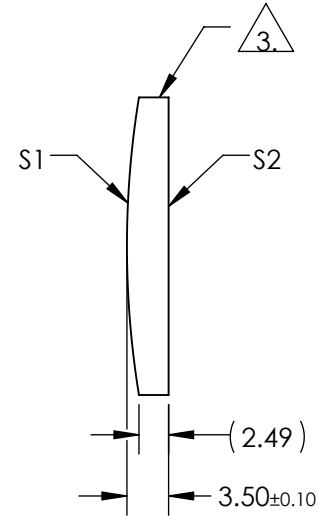
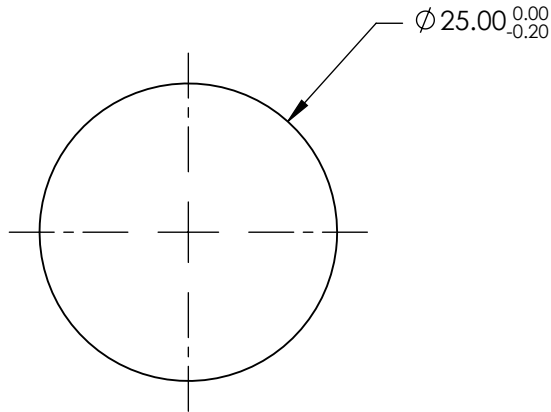


NOTES:

1. SUBSTRATE MATERIAL:  
N-BK7
2. COATING (APPLY ACROSS CLEAR APERTURE)
- S1 & S2: NIR I (600-1050nm)  
R(AVG) ≤0.5% @ 600 - 1050nm
3. FINE GROUND SURFACE
4. RoHS COMPLIANT



**FOR INFORMATION ONLY:  
DO NOT MANUFACTURE  
PARTS TO THIS DRAWING**

SPECIFICATIONS SUBJECT TO CHANGE WITHOUT NOTICE  
DIMENSIONS ARE FOR REFERENCE ONLY

	S1	S2	EFL	150.00	 Edmund Optics®		
SHAPE	CONVEX	PLANO	BFL	147.7			
RADIUS	77.78	INFINITY			TITLE	25mm DIA X 150mm FL NIR I COATED, CYLINDER LENS	
SURFACE QUALITY	60-40	60-40					
CLEAR APERTURE	Ø24.00	Ø24.00			DWG NO	69757	
BEVEL	PROTECTIVE AS NEEDED	PROTECTIVE AS NEEDED					
			ALL DIMS IN	mm			
						SHEET 1 OF 1	