

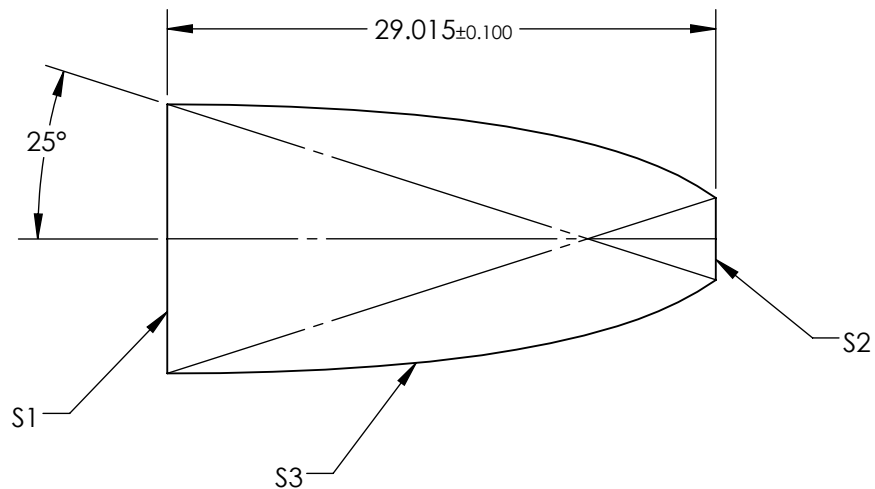
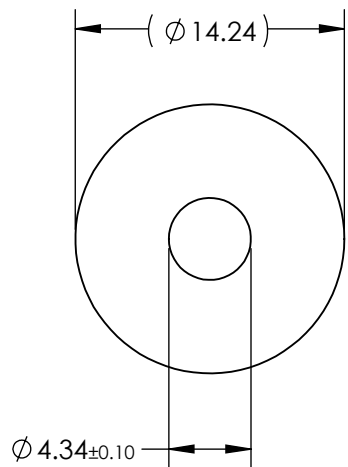
NOTES:

1. SUBSTRATE:
B270

2. COATING

S1: BBAR (420-680nm)
R(AVG): <0.5% @ 420 - 680nm
S2: NONE
S3: NONE

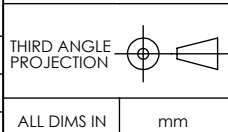
3. EDGES: FINE GROUND



**FOR INFORMATION ONLY:
DO NOT MANUFACTURE
PARTS TO THIS DRAWING**

SPECIFICATIONS SUBJECT TO CHANGE WITHOUT NOTICE DIMENSIONS ARE FOR REFERENCE ONLY

| REV. A | S1 | S2 | S3 |
|-----------------|----------------------|--------------------|-----------|
| SHAPE | PLANO | PLANO | PARABOLIC |
| RADIUS | ∞ | ∞ | ASPHERIC |
| SURFACE QUALITY | 80-50 | 80-50 | (80-50) |
| CLEAR APERTURE | $\varnothing 12.82$ | $\varnothing 3.91$ | N/A |
| BEVEL MAX | PROTECTIVE AS NEEDED | | NONE |



EO® Edmund Optics®

| TITLE | DWG NO | SHEET |
|---|--------|--------|
| 25° 4.34mm OUTPUT DIA., COMPOUND PARABOLIC CONCENTRATOR | 63229 | 1 OF 1 |