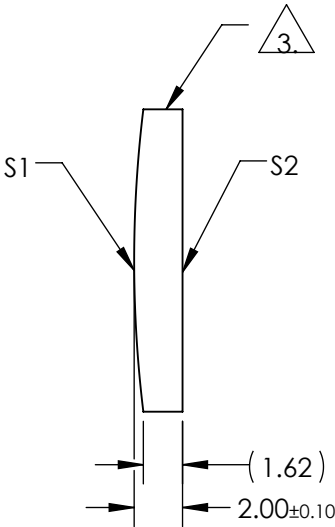
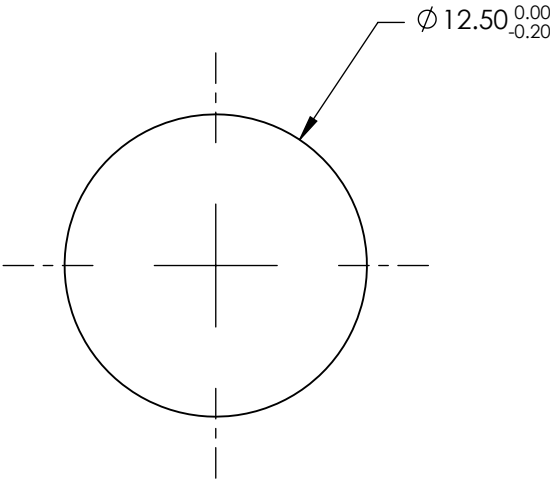


NOTES:

1. SUBSTRATE MATERIAL:
N-BK7
2. COATING (APPLY ACROSS CLEAR APERTURE)
- S1 & S2: NONE

3. FINE GROUND SURFACE

4. RoHS COMPLIANT



**FOR INFORMATION ONLY:
DO NOT MANUFACTURE
PARTS TO THIS DRAWING**

SPECIFICATIONS SUBJECT TO CHANGE WITHOUT NOTICE
DIMENSIONS ARE FOR REFERENCE ONLY

	S1	S2	EFL	100.00	 Edmund Optics®	
SHAPE	CONVEX	PLANO	BFL	98.68		
RADIUS	51.68	INFINITY			TITLE	12.5mm DIA X 100mm FL UNCOATED, CYLINDER LENS
SURFACE QUALITY	60-40	60-40				
CLEAR APERTURE	Ø11.50	Ø11.50			DWG NO	47743
BEVEL	PROTECTIVE AS NEEDED	PROTECTIVE AS NEEDED				
			ALL DIMS IN	mm		SHEET 1 OF 1