

NOTES:

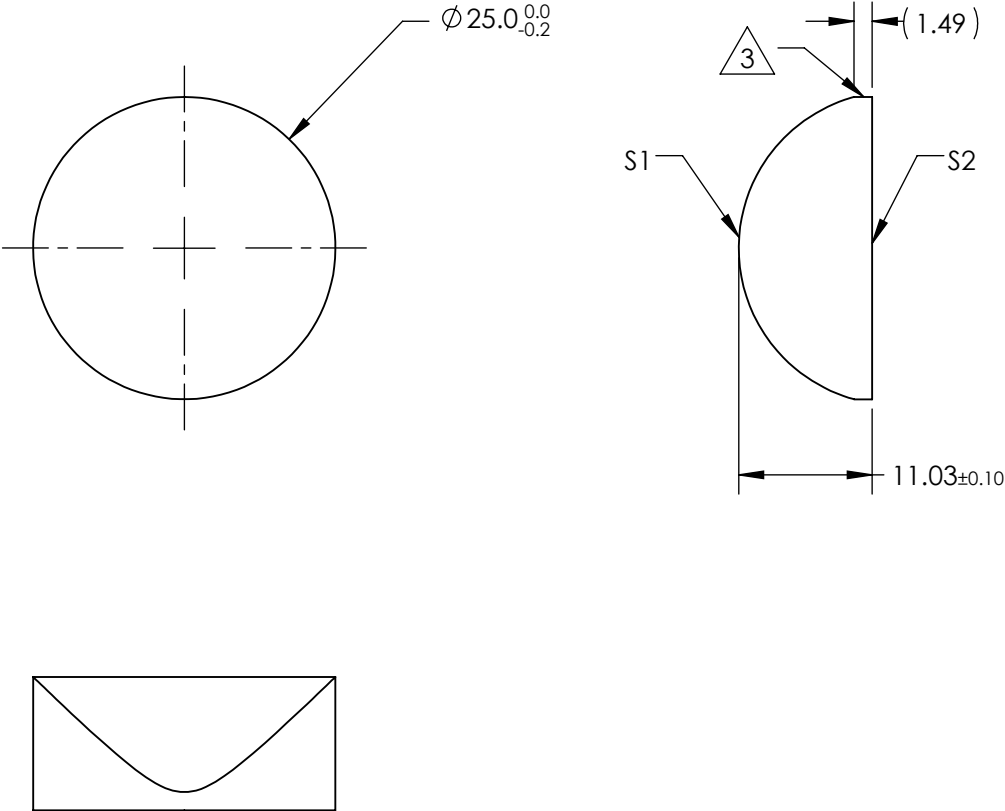
1. SUBSTRATE MATERIAL:  
N-BK7
2. COATING (APPLY ACROSS CLEAR APERTURE)

S1 & S2:  
LASER V-COAT

R(abs) <0.25% @ 1064nm


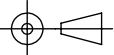
3. FINE GROUND SURFACE

4. POWER, IRREGULARITY, AND SURFACE QUALITY  
SPECIFICAIONS APPLY ACROSS CLEAR APERTURE
5. RoHS COMPLIANT



**FOR INFORMATION ONLY:  
DO NOT MANUFACTURE  
PARTS TO THIS DRAWING**

SPECIFICATIONS SUBJECT TO CHANGE WITHOUT NOTICE  
DIMENSIONS ARE FOR REFERENCE ONLY

	S1	S2	EFL	25±3%	 <b>Edmund Optics®</b>		
SHAPE	CONVEX	PLANO	BFL	(17.74)			
RADIUS	12.96	∞			TITLE	25.0mm DIA X 25.0mm FL 1064nm V-COAT, CYLINDER LENS	
SURFACE QUALITY	60-40	60-40					
CLEAR APERTURE	Ø 24.00	Ø 24.00	ALL DIMS IN		DWG NO	33235	
COATING APERTURE	Ø 24.00	Ø 24.00					
BEVEL	PROTECTED AS NEEDED	PROTECTED AS NEEDED	mm				SHEET 1 OF 1