

NOTES:

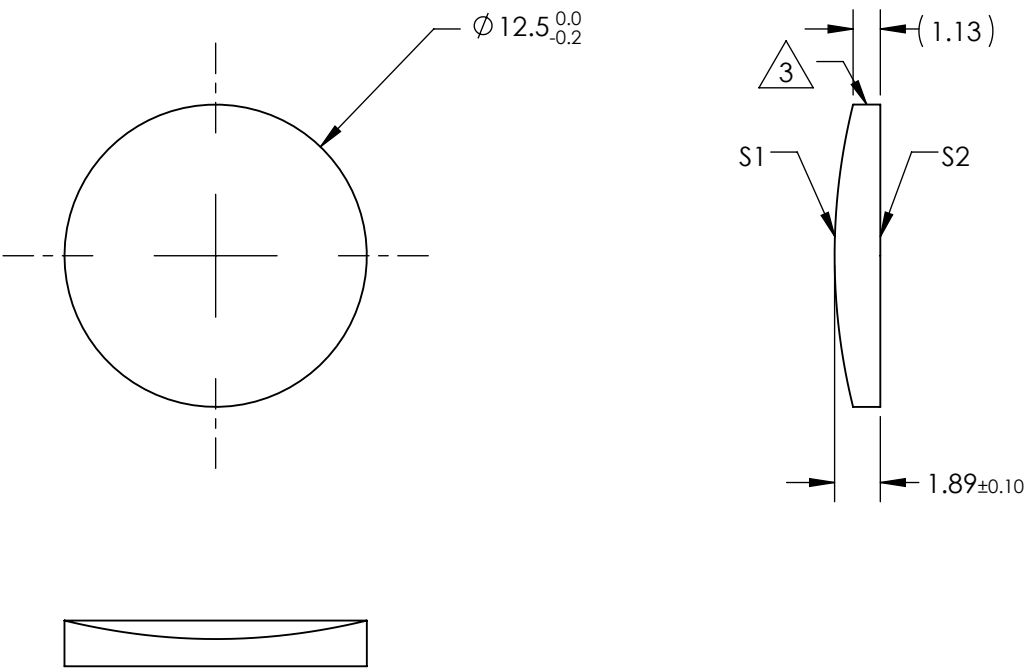
1. SUBSTRATE MATERIAL:
N-BK7
2. COATING (APPLY ACROSS CLEAR APERTURE)

S1 & S2:
LASER V-COAT

R(abs) <0.25% @ 532nm
R(avg) <1.5% @ 495 - 570nm


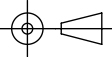
3. FINE GROUND SURFACE

4. POWER, IRREGULARITY, AND SURFACE QUALITY
SPECIFICAIONS APPLY ACROSS CLEAR APERTURE
5. RoHS COMPLIANT



**FOR INFORMATION ONLY:
DO NOT MANUFACTURE
PARTS TO THIS DRAWING**

SPECIFICATIONS SUBJECT TO CHANGE WITHOUT NOTICE
DIMENSIONS ARE FOR REFERENCE ONLY

REV. A	S1	S2	EFL	50±3%	 Edmund Optics®		
SHAPE	CONVEX	PLANO	BFL	(48.75)			
RADIUS	25.93	∞			TITLE	12.5mm DIA X 50.0mm FL 532nm V-COAT, CYLINDER LENS	
SURFACE QUALITY	60-40	60-40					
CLEAR APERTURE	∅ 11.50	∅ 11.50	ALL DIMS IN		DWG NO	33224	
COATING APERTURE	∅ 11.50	∅ 11.50					
BEVEL	PROTECTED AS NEEDED	PROTECTED AS NEEDED	mm				SHEET 1 OF 1