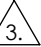

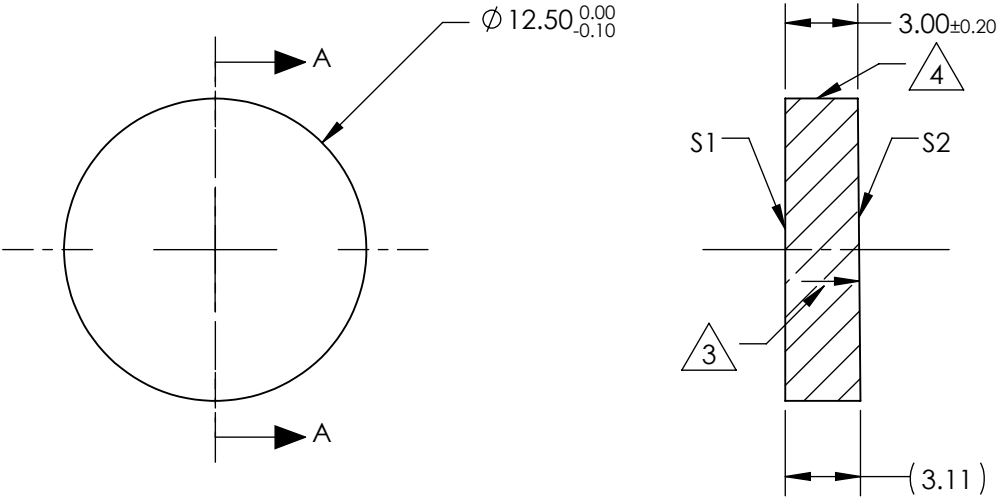


NOTES:


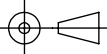
- 1. SUBSTRATE MATERIAL:
FUSED SILICA
- 2. COATING (APPLY ACROSS CLEAR APERTURE)
S1: NONE
S2: NONE
- 3.  ARROW POINTS TOWARDS TILTED SURFACE
- 4.  FINE GROUND SURFACE
- 5. POWER, IRREGULARITY, AND SURFACE QUALITY
SPECIFICATIONS APPLY ACROSS CLEAR APERTURE
- 6. RoHS COMPLIANT



SECTION A-A

**FOR INFORMATION ONLY:
DO NOT MANUFACTURE
PARTS TO THIS DRAWING**

SPECIFICATIONS SUBJECT TO CHANGE WITHOUT NOTICE
DIMENSIONS ARE FOR REFERENCE ONLY

REV. A	S1	S2				
SHAPE	PLANO	PLANO				
RADIUS	∞	∞				
MIN CLEAR APERTURE	Ø11.25	Ø11.25				
SURFACE QUALITY	20-10	20-10				
SURFACE ACCURACY	λ/10	λ/10				
BEVEL	PROTECTIVE AS NEEDED	PROTECTIVE AS NEEDED	ALL DIMS IN	mm	TITLE	12.5mm Dia., Uncoated, Fused Silica Wedged Window
					DWG NO	34241
					SHEET 1 OF 1	