

NOTES:

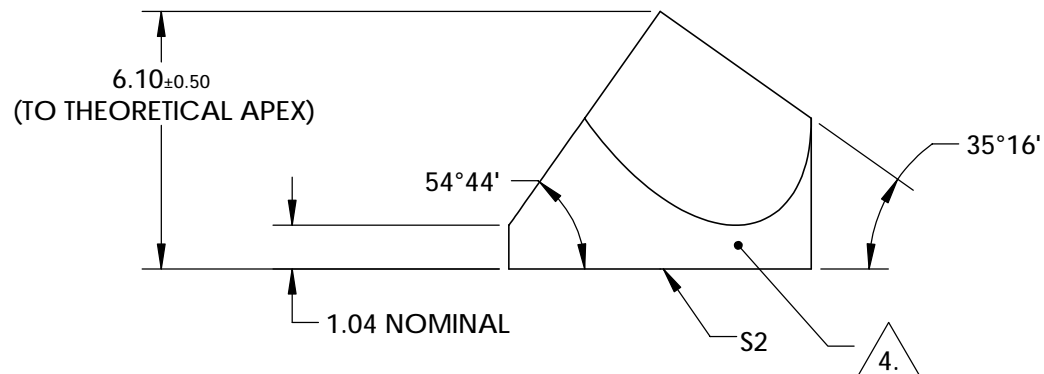
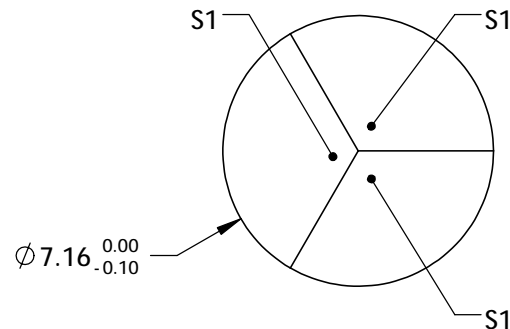
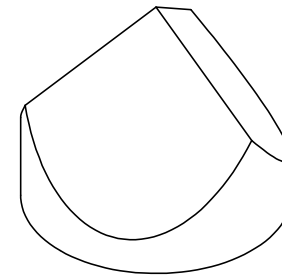
1. SUBSTRATE : FUSED SILICA
2. BLACK OVERPAINT IS 30-60 μm THICK
3. COATING (APPLY ACROSS COATING APERTURE)
S1: ALUMINUM WITH PROTECTED OVERCOAT (BLACK OVERPAINT)
R(AVG)>85% FROM 400-700nm, @ 45° AOI

S2: UNCOATED

4. FINE GRIND SURFACE


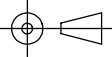
5. ROHS COMPLIANT

6. CLEAR APERTURE (%): 85



**FOR INFORMATION ONLY:
DO NOT MANUFACTURE
PARTS TO THIS DRAWING**

SPECIFICATIONS SUBJECT TO CHANGE WITHOUT NOTICE
DIMENSIONS ARE FOR REFERENCE ONLY

REV A	S1 & S2	 Edmund Optics®			
SURFACE FLATNESS	$\lambda/10$				
SURFACE QUALITY	20-10				
WAVELENGTH RANGE	400 - 700 nm				
ANGLE TOL. (arcsec)	10	7.16mm ALUMINUM COATED, FUSED SILICA CORNER CUBE			
BEVEL	PROTECTED AS NEEDED				
		ALL DIMS IN	mm	DWG NO	49012
					SHEET 1 OF 1