

NOTES:

1. SUBSTRATE MATERIAL: BOROFLOAT®

2. PARABOLIC SURFACE:

$Z=Y^2/[4 * EFL]$

3. COATING (APPLY ACROSS CLEAR APERTURE)

S1: PROTECTED GOLD
R(avg) >96% @ 700 - 2000
R(avg) >96% @ 2000 - 10000nm
S2: NONE

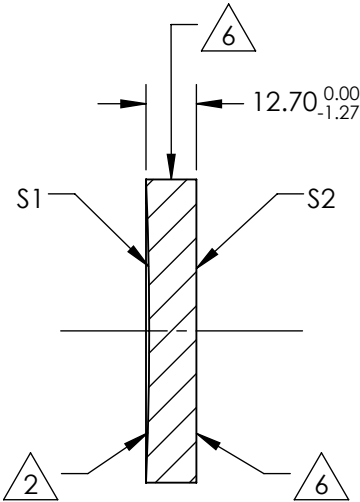
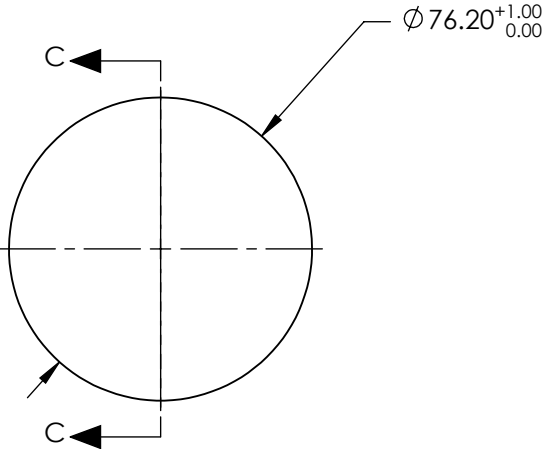
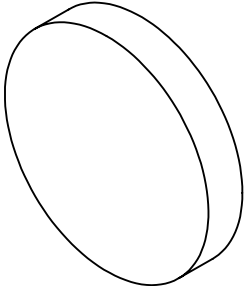
4. EDGES: MOLDED EDGE ACCEPTABLE

5. POWER, IRREGULARITY, SURFACE QUALITY AND COATING
SPECIFICATIONS APPLY ACROSS CLEAR APERTURE

6. FINE GRIND SURFACE

7. RoHS COMPLIANT

**FOR INFORMATION ONLY:
DO NOT MANUFACTURE
PARTS TO THIS DRAWING**



SECTION C-C

SPECIFICATIONS SUBJECT TO CHANGE WITHOUT NOTICE
DIMENSIONS ARE FOR REFERENCE ONLY

| | S1 | S2 |
|------------------------|----------------------|----------------------|
| SHAPE | CONCAVE | PLANO |
| EFFECTIVE FOCAL LENGTH | 444.5 | N/A |
| FOCAL LENGTH TOLERANCE | ±1% | N/A |
| SURFACE QUALITY | 60-40 | FINE GRIND |
| SURFACE FLATNESS | λ/8 | N/A |
| BEVEL | PROTECTIVE AS NEEDED | PROTECTIVE AS NEEDED |

Edmund Optics®



ALL DIMS IN

mm

TITLE

3" Diameter x 17.5" FL Protected Gold,
Parabolic Mirror

DWG NO

32064566

SHEET
1 OF 1