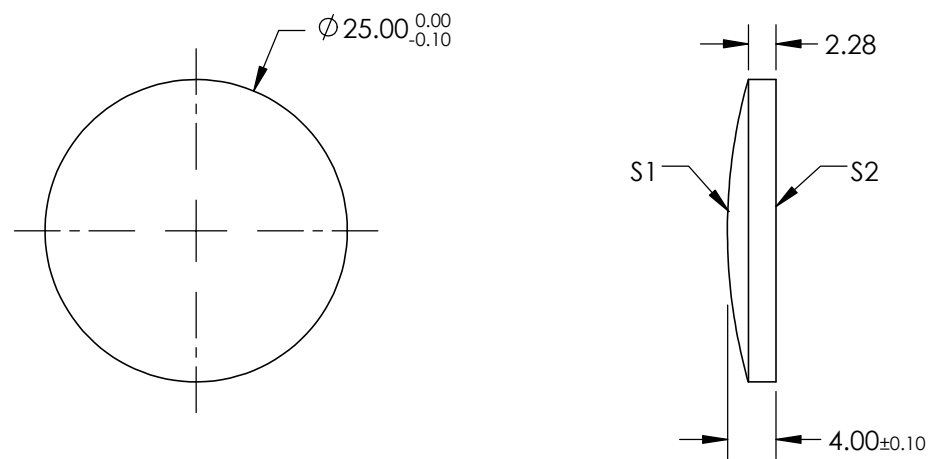

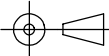
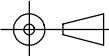


- NOTES:
- 1. SUBSTRATE: VACUUM UV GRADE CaF2
 - 2. COATING
 - S1: NONE
 - S2: NONE
 - 3. CENTERING: <3 arcmin
 - 4. RoHS: COMPLIANT



**FOR INFORMATION ONLY:
DO NOT MANUFACTURE
PARTS TO THIS DRAWING**

SPECIFICATIONS SUBJECT TO CHANGE WITHOUT NOTICE
DIMENSIONS ARE FOR REFERENCE ONLY

	S1	S2	EFL @ 266nm: 100		 Edmund Optics®		
SHAPE	CONVEX	PLANO	BFL @ 266nm: 97.27				
RADIUS	46.2mm	∞			TITLE	25mm DIA. X 100mm FL CALCIUM FLUORIDE PCX LENS	
SURFACE QUALITY	40-20	40-20					
CLEAR APERTURE	>90%	>90%			DWG NO	88166	
BEVEL	PROTECTIVE AS NEEDED	PROTECTIVE AS NEEDED					
			ALL DIMS IN	mm			
						SHEET 1 OF 1	