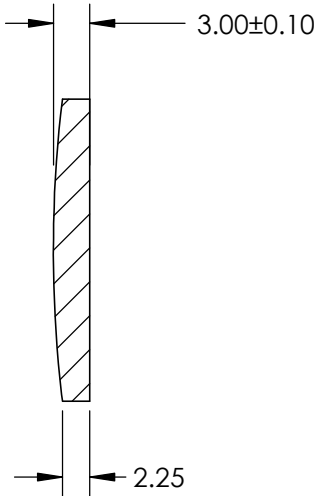
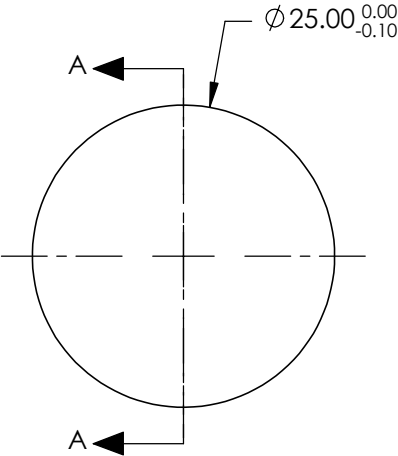



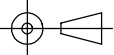
NOTES:

- 1. SUBSTRATE: GERMANIUM (GE)
- 2. COATING (APPLY ACROSS COATING APERTURE)  
S1: R(avg) <3.0% @ 3 - 5µm  
S2: R(avg) <3.0% @ 3 - 5µm
- 3. EDGES DIAMOND TURNED
- 4. CENTERING: <3 ARCMIN
- 5. RoHS COMPLIANT



SECTION A-A

**FOR INFORMATION ONLY:  
DO NOT MANUFACTURE  
PARTS TO THIS DRAWING**

|                 | S1                   | S2                   | SPECIFICATIONS SUBJECT TO CHANGE WITHOUT NOTICE<br>DIMENSIONS ARE FOR REFERENCE ONLY  |       |   |   |
|-----------------|----------------------|----------------------|---|-------|---|---|
| SHAPE           | CONVEX               | PLANO                | EFL @ 10.6µm  | 35    |  <b>Edmund Optics®</b> |   |
| RADIUS          | 105.14               | ∞                    | BFL @ 10.6µm  | 34.25 |   |   |
| SURFACE QUALITY | 60-40                | 60-40                |  |       | TITLE   | 25mm DIA. X 35mm FL, 3 - 5µm COATED, GE<br>PLANO-CONVEX LEN |
| CLEAR APERTURE  | Ø24                  | Ø24                  |   |       |   |   |
| BEVEL           | PROTECTIVE AS NEEDED | PROTECTIVE AS NEEDED | ALL DIMS IN   | mm    | DWG NO  | 69651   |
|                 |                      |                      |   |       |   | SHEET<br>1 OF 1   |