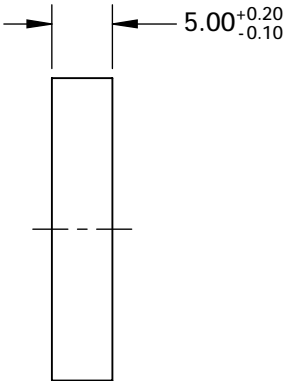
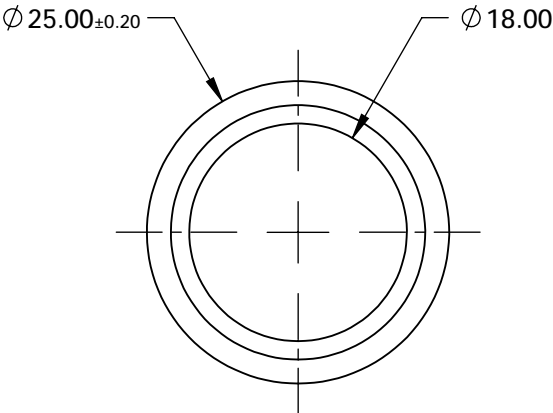
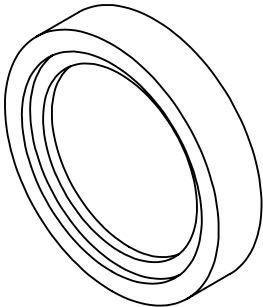


NOTES:
1. SUBSTRATE:
ZINC SELENIDE (ZnSe)



**FOR INFORMATION ONLY:
DO NOT MANUFACTURE
PARTS TO THIS DRAWING**

SPECIFICATIONS SUBJECT TO CHANGE WITHOUT NOTICE
DIMENSIONS ARE FOR REFERENCE ONLY

DAMAGE THRESHOLD	50W/cm ²
EXTINCTION RATIO	150:1 @ 3μm; 300:1 @ 10μm
PARALLELISM	≤3 ARCMIN
SURFACE FLATNESS	λ/20 @ 10.6μm
SURFACE QUALITY	60-40
TRANSMISSION	>50% @ 2.5 -19μm



THIRD ANGLE
PROJECTION

ALL DIMS IN

mm



Edmund Optics®

TITLE

Ø25mm, ZnSe, IR HOLOGRAPHIC WIRE GRID
POLARIZER

DWG NO

62772

SHEET
1 OF 1