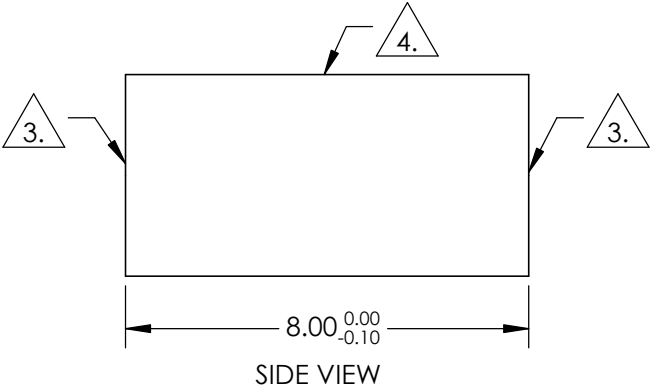
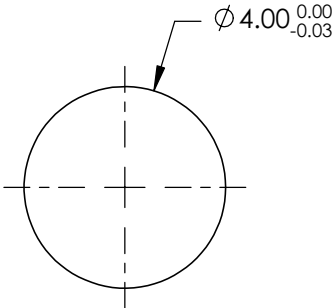


NOTES:

- 1. SUBSTRATE: N-BK7
- 2. COEFFICIENT OF THERMAL EXPANSION:
CTE = n/α
- 3. FINE GRIND SURFACE
- 4. POLISHED SURFACE
- 4. RoHS COMPLIANT



**FOR INFORMATION ONLY:
DO NOT MANUFACTURE
PARTS TO THIS DRAWING**

SPECIFICATIONS SUBJECT TO CHANGE WITHOUT NOTICE
DIMENSIONS ARE FOR REFERENCE ONLY

REV. A	
WAVELENGTH RANGE (nm)	350 - 2200
SURFACE QUALITY	40-20
TYPE	ROD LENS
BEVEL	PROTECTIVE AS NEEDED

THIRD ANGLE
PROJECTION

ALL DIMS IN

mm

Edmund Optics®

TITLE

Ø4mm x 8mm , N-BK7 ROD LENS

DWG NO

54089

SHEET
1 OF 1