

NOTES:

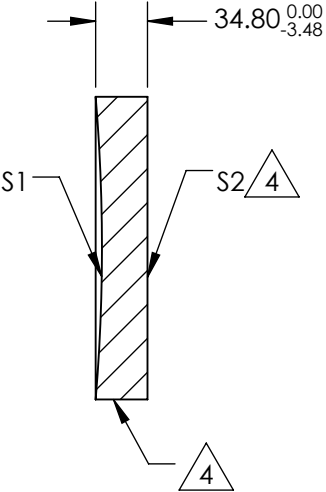
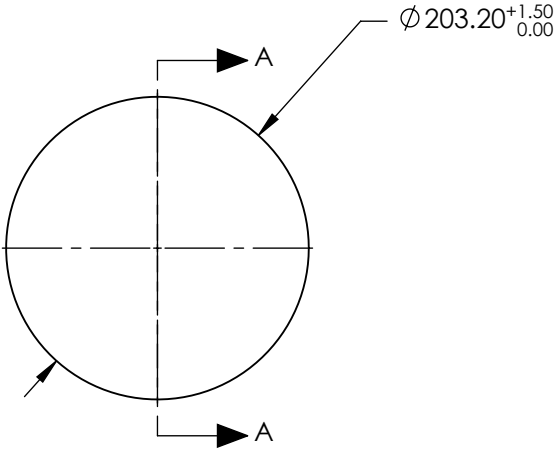
1. SUBSTRATE MATERIAL:
BOROFLOAT®
2. COATING (APPLY ACROSS CLEAR APERTURE)

S1: PROTECTED GOLD
R(avg) >96% @ 700 - 2000
R(avg) >96% @ 2000 - 10000nm
DENSITY LIMIT: 0.8 J/cm² @ 1064nm, 10ns
S2: NONE

3. POWER, IRREGULARITY, SURFACE QUALITY, AND COATING
SPECIFICATIONS APPLY ACROSS CLEAR APERTURE

4. FINE GROUND SURFACE

5. ROHS COMPLIANT



SECTION A-A

**FOR INFORMATION ONLY:
DO NOT MANUFACTURE
PARTS TO THIS DRAWING**

SPECIFICATIONS SUBJECT TO CHANGE WITHOUT NOTICE
DIMENSIONS ARE FOR REFERENCE ONLY

REV. A	S1	S2
SHAPE	CONCAVE	PLANO
EFFECTIVE FOCAL LENGTH	609.6mm	N/A
FOCAL LENGTH TOLERANCE	±2%	N/A
APERTURE	f/3	N/A
SURFACE QUALITY	60-40	60-40
SURFACE FLATNESS	λ/4	λ/4
BEVEL	PROTECTIVE AS NEEDED	PROTECTIVE AS NEEDED



ALL DIMS IN mm

Edmund Optics®

TITLE Ø8in, 24in FL PROTECTED GOLD, SPHERICAL MIRROR

DWG NO 43591

SHEET 1 OF 1