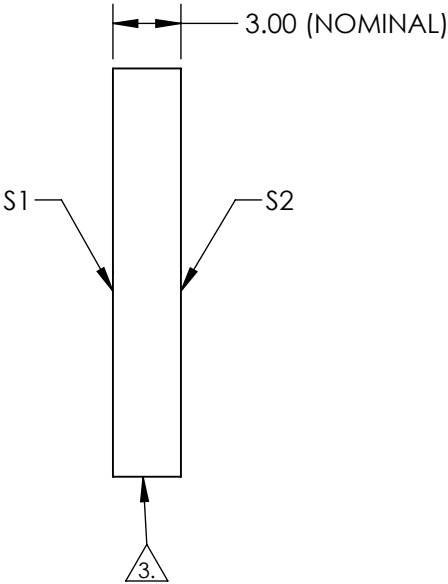
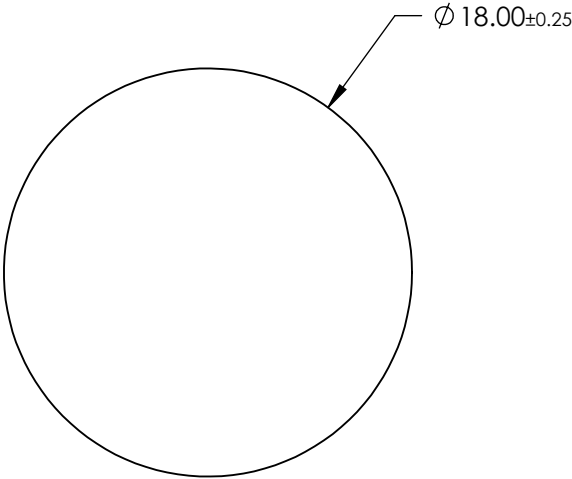



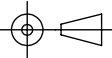
NOTES:

- 1. SUBSTRATE: Float Glass
- 2. COATING (APPLY ACROSS CLEAR APERTURE)
 - S1: Protected Silver (450-10000nm)
 - R(AVG) >98% @ 450 - 800nm
 - R(AVG) >98.5% @ 2000 - 10,000nm
 - S2: NONE
- 3. EDGES GROUND
- 4. RoHS COMPLIANT



**FOR INFORMATION ONLY:
DO NOT MANUFACTURE
PARTS TO THIS DRAWING**

SPECIFICATIONS SUBJECT TO CHANGE WITHOUT NOTICE
DIMENSIONS ARE FOR REFERENCE ONLY

	S1	S2	 Edmund Optics®			
SHAPE	PLANO	PLANO		TITLE	18mm Dia Protected Silver, 4-6λ Mirror	
SURFACE QUALITY	60-40	N/A		DWG NO	36042	SHEET 1 OF 1
SURFACE FLATNESS	4 - 6λ	N/A				
CLEAR APERTURE	Ø 17.00	N/A				
BEVEL	PROTECTED AS NEEDED	PROTECTED AS NEEDED	ALL DIMS IN	mm		