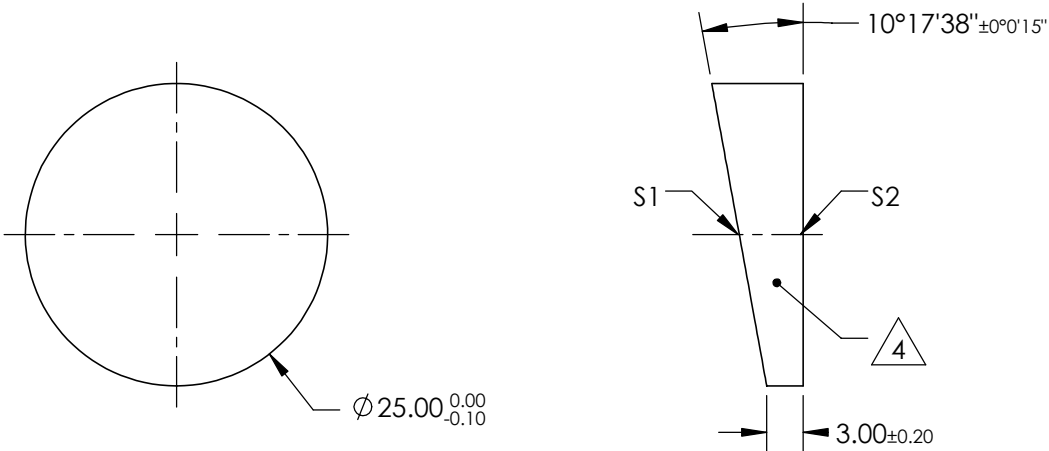


NOTES:


- 1. SUBSTRATE MATERIAL: FUSED SILICA
- 2. ONLY ROHS-COMPLIANT MATERIALS ARE ACCEPTABLE.
DO NOT SUBSTITUTE WITH ROHS EXEMPT OR NON-COMPLIANT MATERIALS
- 3. COATING (APPLY ACROSS CLEAR APERTURE)
S1 & S2 : UV-VIS
Ravg ≤1.5% @ 250 - 700nm
Rabs ≤1.0% @ 350 - 450nm
- 4. FINE GRIND SURFACE
- 5. POWER, IRREGULARITY, AND SURFACE QUALITY SPECIFICATIONS APPLY ACROSS CLEAR APERTURE
- 6. CHIPS OUTSIDE OF CLEAR APERTURE: <0.5
- 7. CLEAR APERTURE AND COATING APERTURE ARE CENTERED ON SURFACES



**FOR INFORMATION ONLY:
DO NOT MANUFACTURE
PARTS TO THIS DRAWING**

REV. A	S1 & S2
SHAPE	PLANO
POWER (DIOPTERS)	8.75
ANGLE TOL. (ARCSEC)	15
SURFACE QUALITY	20-10
SURFACE FLATNESS	$\lambda/10$
WAVELENGTH RANGE (nm)	200 - 2200
CLEAR APERTURE	$\phi 22.50$
IMAGE ORIENTATION	BEAM DEVIATION
BEVEL	PROTECTIVE AS NEEDED

SPECIFICATIONS SUBJECT TO CHANGE WITHOUT NOTICE
DIMENSIONS ARE FOR REFERENCE ONLY

THIRD ANGLE PROJECTION				
ALL DIMS IN		TITLE	5.0° NOM. FUSED SILICA WEDGE PRISM, UV-VIS COATED	
mm		DWG NO	89642	SHEET 1 OF 1