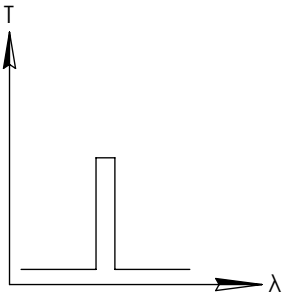
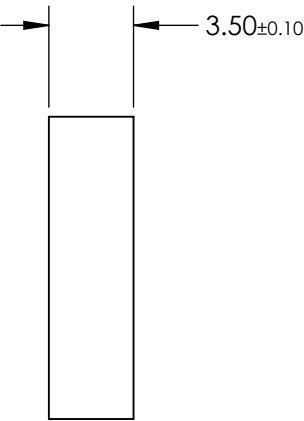
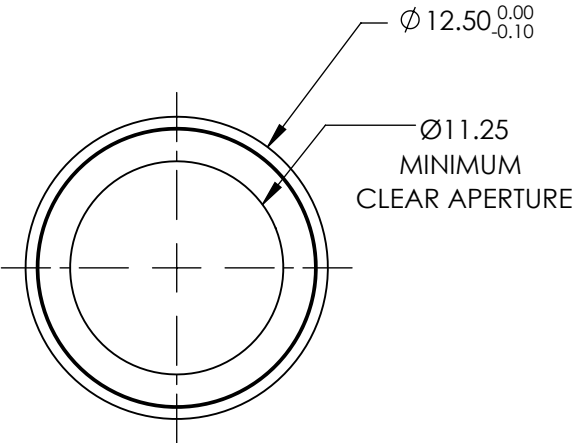
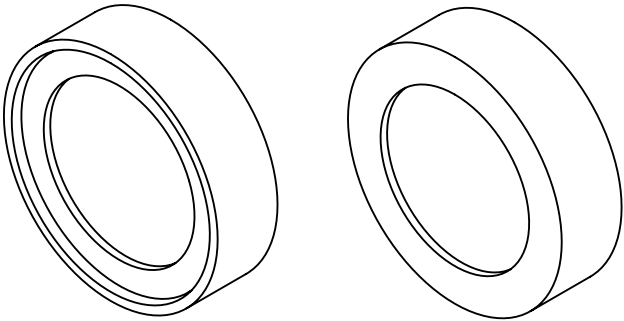


**FOR INFORMATION ONLY:  
DO NOT MANUFACTURE  
PARTS TO THIS DRAWING**



BANDPASS FILTER

SPECIFICATIONS SUBJECT TO CHANGE WITHOUT NOTICE  
DIMENSIONS ARE FOR REFERENCE ONLY

| REV. A                     | VALUE                      |
|----------------------------|----------------------------|
| CENTER WAVELENGTH (CWL)    | 1064nm                     |
| FULL WIDTH HALF MAX (FWHM) | 5 ±1.5nm                   |
| MINIMUM TRANSMISSION       | >80%                       |
| BLOCKING WAVELENGTH RANGE  | 900 - 1054 & 1074 - 1400nm |
| SURFACE QUALITY            | 60-40                      |
| COATING TYPE               | HARD COATED                |



ALL DIMS IN

mm

**EO**® **Edmund Optics®**

TITLE

Ø12.5mm, 1064nm CWL, 5nm FWHM, HARD  
COATED LASER CLEAN-UP FILTER

DWG NO

68859

SHEET  
1 OF 1