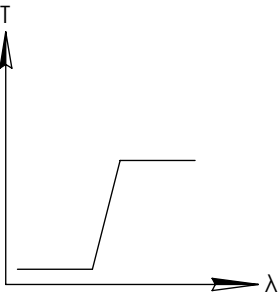
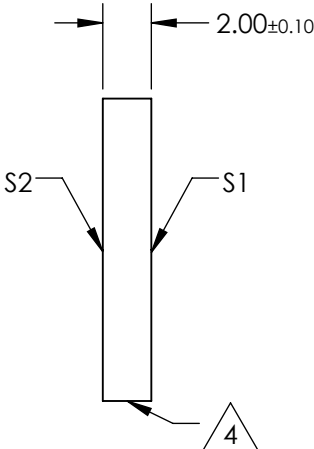
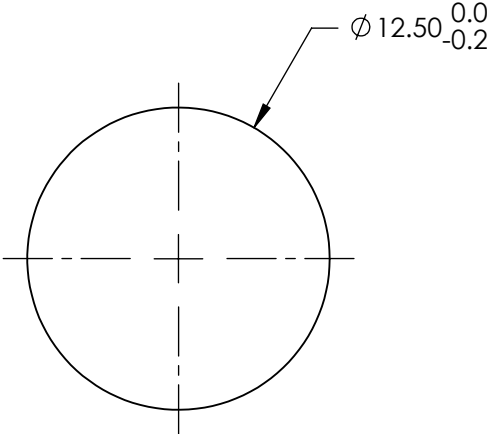
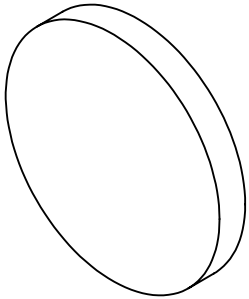


**FOR INFORMATION ONLY:
DO NOT MANUFACTURE
PARTS TO THIS DRAWING**

NOTES:

1. SUBSTRATE: UV FUSED SILICA
2. SURFACE S2 TO BE PARALLEL WITH SURFACE S1 TO WITHIN 5 arcsec
3. COATING (APPLY ACROSS COATING APERTURE)
S1: HARD DIELECTRIC SPUTTERED
T(avg): $\geq 91\%$ FROM 508 - 1650nm @ 0° AOI
T(avg): $\leq 0.01\%$ FROM 200 - 490nm @ 0° AOI
T(abs): $\approx 50\%$ FOR 500 \pm 5nm @ 0° AOI

S2: SINGLE LAYER MgF2
4. FINE GRIND SURFACE
5. POWER, IRREGULARITY, AND SURFACE QUALITY SPECIFICATIONS
APPLY ACROSS CLEAR APERTURE
6. TRANSMITTED WAVEFRONT DISTORTION, RMS: $\leq \lambda/4$ @ 633nm (prior to coating)
7. ROHS COMPLIANT



LONGPASS FILTER

SPECIFICATIONS SUBJECT TO CHANGE WITHOUT NOTICE
DIMENSIONS ARE FOR REFERENCE ONLY

| | S1 | S2 |
|-----------------|----------------------|----------------------|
| SHAPE | PLANO | PLANO |
| SURFACE QUALITY | 60-40 | 60-40 |
| CLEAR APERTURE | >80% | >80% |
| BEVEL | PROTECTIVE AS NEEDED | PROTECTIVE AS NEEDED |

| | | | |
|------------------------|--|----------------|--|
| THIRD ANGLE PROJECTION | | Edmund Optics® | |
| ALL DIMS IN mm | | TITLE | Ø12.5mm, 500nm, HIGH PERFORMANCE LONGPASS FILTER |
| | | DWG NO | 62976 |
| | | SHEET 1 OF 1 | |