

NOTES:

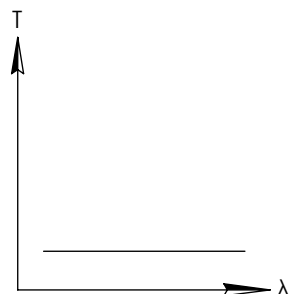
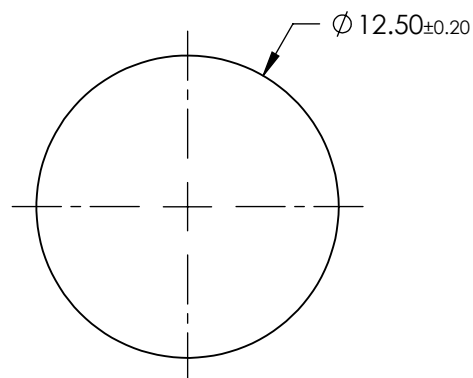
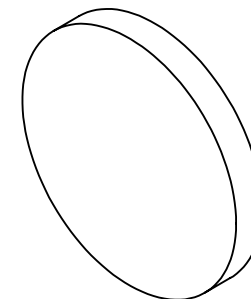
1. SUBSTRATE: FUSED SILICA
2. SURFACE S2 TO BE PARALLEL WITH SURFACE S1 TO WITHIN < 10 ARCMINS
3. COATING(APPLY ACROSS CLEAR APERTURE)  
METALLIC BASED ND, OPTICAL DENSITY (abs) =  $1.5 \pm 10\%$  FROM 700 - 1100nm

4. FINE GROUND SURFACE

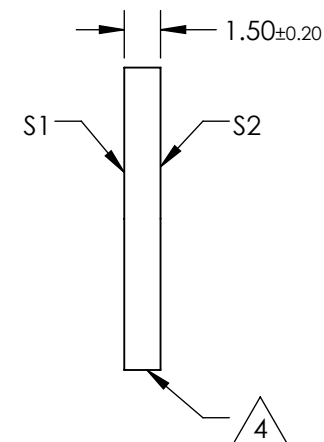
5. POWER, IRREGULARITY, AND SURFACE QUALITY SPECIFICATIONS APPLY ACROSS CLEAR APERTURE

6. ROHS COMPLIANT

**FOR INFORMATION ONLY:  
DO NOT MANUFACTURE  
PARTS TO THIS DRAWING**



IR NEUTRAL DENSITY FILTER



SPECIFICATIONS SUBJECT TO CHANGE WITHOUT NOTICE  
DIMENSIONS ARE FOR REFERENCE ONLY

	S1	S2
SHAPE	PLANO	PLANO
SURFACE FLATNESS	3 - 5λ	3 - 5λ
SURFACE QUALITY	40-20	40-20
CLEAR APERTURE	Ø10.0	Ø10.0
BEVEL	PROTECTIVE AS NEEDED	PROTECTIVE AS NEEDED



ALL DIMS IN mm

**Edmund Optics®**

TITLE

OD 1.5, Ø12.5mm, NIR ND FILTER

DWG NO

47829

SHEET  
1 OF 1