

NOTES:

1. SUBSTRATE: UV GRADE FUSED SILICA
2. COATING (APPLY ACROSS COATING APERTURE)

DURABILITY: MIL-C-48497A, SECT. 3.4.1

PERFORMANCE SPECIFICATIONS @ 0° AOI

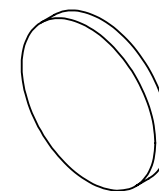
T(AVG): ≥91% FROM 510 - 1085nm

T(AVG): ≤0.01% FROM 1140 - 1530nm

CUT-OFF SLOPE: <1%

CUT-OFF WAVELENGTH: 1100nm ± 1%

**FOR INFORMATION ONLY:  
DO NOT MANUFACTURE  
PARTS TO THIS DRAWING**

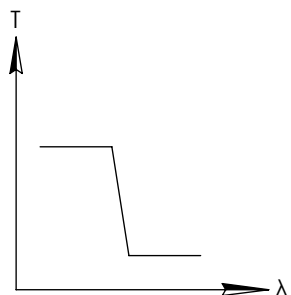
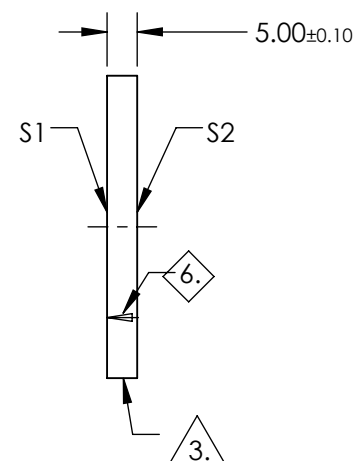
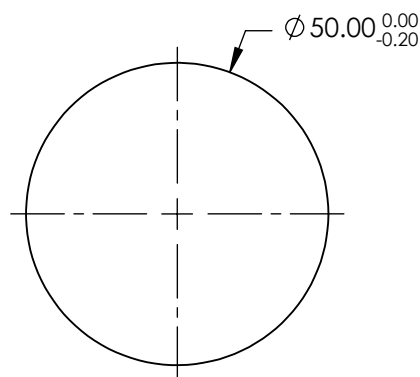


3. FINE GRIND SURFACE

4. TRANSMITTED WAVEFRONT DISTORTION RMS @ ≤λ/4 (prior to coating)

5. ROHS COMPLIANT

6. ARROW POINTS TOWARDS THE FILTER COATED SURFACE

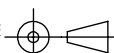


SHORTPASS FILTER

SPECIFICATIONS SUBJECT TO CHANGE WITHOUT NOTICE  
DIMENSIONS ARE FOR REFERENCE ONLY

	S1	S2
SHAPE	PLANO	PLANO
SURFACE QUALITY	60-40	60-40
CLEAR APERTURE	>80%	>80%
BEVEL	PROTECTIVE AS NEEDED	PROTECTIVE AS NEEDED

THIRD ANGLE  
PROJECTION



ALL DIMS IN

mm

**Edmund Optics®**

TITLE

1100nm 50mm Diameter, OD 4 Shortpass Filter

DWG NO

84735

SHEET  
1 OF 1