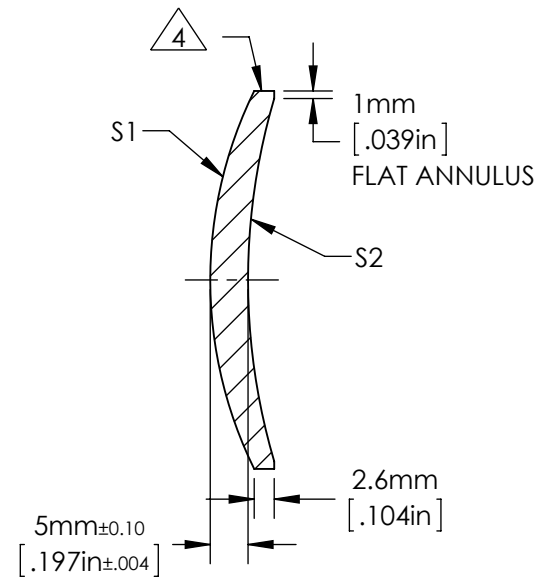
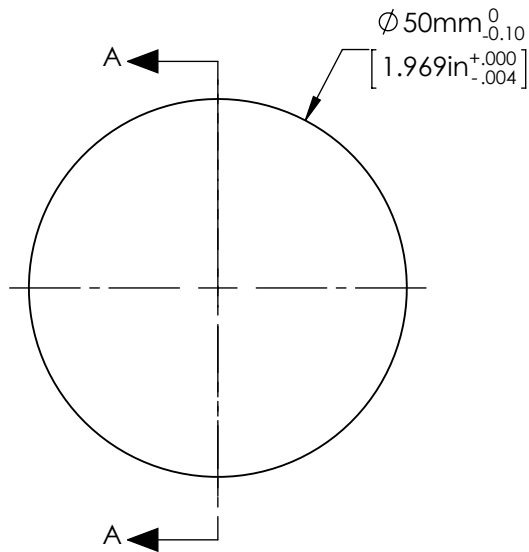


NOTES:

- 1. ALLOWABLE OPTICAL MATERIAL:  
OPTICAL GRADE GERMANIUM
- 2. CENTERING TOLERANCE (AT 587.6nm):  
BEAM DEVIATION: <3 ARCMINUTES
- 3. COATING (APPLY ACROSS COATING APERTURE)  
S1 & S2: T(AVG) > 94% FROM 8.0-12.0µm  
R(AVG) <1.0% FROM 8.0-12.0µm

4. EDGES DIAMOND TURNED



SECTION A-A

FOR INFORMATION ONLY:  
DO NOT MANUFACTURE PARTS TO THIS DRAWING

	S1	S2	EFL (AT 10.6μm)	(50.00)	<div> Edmund Optics®</div>	
SHAPE	CONVEX	CONCAVE				
RADIUS	56.64	84.91	BFL (AT 10.6μm)	(46.69)	TITLE	ø50mm x 50mm FL, 8-12μm COATED GERMANIUM MENISCUS LENS
SURFACE QUALITY	60 - 40	60 - 40				
CLEAR APERTURE	≥ ø45.00	≥ ø45.00	ALL DIMS IN	mm	DWG NO	87970
BEVEL MAX FACE	0.3mm x 45°	0.3mm x 45°				